

The Silverboss Property
Exploring adjacent a past producing molybdenum mine
Copper, Molybdenum, Gold, Silver



Cautionary Statements

Neither the TSX Venture Exchange nor its Regulation Services Provider (as that term is defined in the policies of the TSX Venture Exchange) accepts responsibility for the adequacy or accuracy of this presentation. Information provided is believed reliable however no assurance as to its accuracy, completeness or timeliness is represented herein. This presentation contains "forward-looking information" within the meaning of applicable securities laws, including statements that address capital costs, recovery, grade, and timing of work or plans at the Company's mineral projects. Forward-looking information may be, but not always, identified by the use of words such as "seek", "anticipate", "plan", "planned", "continue", "expect", "thought to", "project", "predict", "potential", "targeting", "intends", "believe", "opportunity", "further" and others, or which describes a goal or action, event or result such as "may", "should", "could", "would", "might" or "will" be undertaken, occur or achieved. Statements also include those that address future mineral production, reserve potential, potential size or scale of a mineralized zone, potential expansion of mineralization, potential type(s) of mining, potential grades as well as to Happy creek's ability to fund ongoing expenditure, or assumptions about future metal or mineral prices, currency exchange rates, metallurgical recoveries and grades, favourable operating conditions, access, political stability, obtaining or renewal of existing or required mineral titles, licenses and permits, labour stability, market conditions, availability of equipment, accuracy of any mineral resources, anticipated costs and expenditures. Assumptions may be based on factors and events that are not within the control of Happy creek and there is no assurance they will prove to be correct. Such forward-looking information involves known and unknown risks, which may cause the actual results to materially differ, and/or any future results expressed or implied by such forward-looking information. Additional information on risks and uncertainties can be found within Financial Statements, Prospectus and other materials found on the Company's SEDAR profile at www.sedar.com. Although Happy creek has attempted to identify important factors that could cause actual actions, events or results to differ materially from those described in forward-looking information, there can be no assurance that such information will prove to be accurate as actual results and future events could differ materially from those anticipated in such statements. Happy creek withholds any obligation to update or revise any forward-looking information, whether as a result of new information, future events or otherwise, unless required by law.

Under NI43-101 (2001), the reader is cautioned that results or information from an adjacent property does not imply similar results or outcomes does or will occur on the subject property. Historical information from the subject or adjacent property cannot not be relied upon as the Company's QP, a term which was created and defined under NI-43-101 has not prepared nor verified the historical information

\$ are US currency unless otherwise noted. "Diversified Metals Exploration" and the Company's logo and images are Marks of Happy Creek Minerals Ltd. All Rights Reserved. David E. Blann, P.Eng., a Qualified Person under NI-43-101 has approved the technical content of this presentation.

Management and Board of Directors

David Blann, P.Eng, President, CEO, Director

Mr. Blann has engaged in precious and base metal exploration, development and production stage projects for 30 years, having a background in mining engineering technology and geological engineering. He has experience as Director and VP Exploration for several Jr. public companies and is the founder of the Company in 2005.

Richard Lee, CMA, Chief Financial Officer

Mr. Lee has spent the past 30 years in public corporate accounting practice with and for publicly listed TSX companies, and has a wealth of financial, accounting and business experience. Mr. Lee has been involved with numerous startup companies in Canada and those registered with the SEC in the United States.

Walter Segsworth, Director, Chair

Walter Segsworth has over 40 years of experience in mining in Canada and overseas and has served as a senior officer of several mining companies including Westmin Resources, where he was President and CEO, and Homestake Mining Company, where he was President and COO. Mr. Segsworth is currently lead independent director of Pan American Silver and a director of Sabina Gold & Silver Corporation. Mr. Segsworth is past Chairman of both the Mining Associations of British Columbia (BC) and Canada and was named B.C.'s Mining Person of the year in 1996.

Rodger Gray, Director

Mr. Gray has over 20 years of experience as a stockbroker and officer of an IDA member firm. Mr. Gray is currently with Wellington-Altus Securities in Toronto, and was until recently, the President and Chief Executive Officer of Toll Cross Securities Inc., a Toronto-based, full-service broker dealer specializing in the junior resource sector. Mr. Gray has previously acted as a Director and Vice-President investment banking, institutional equities, with First Associates Investments Inc. and prior thereto as President of St. James Securities Inc. Mr. Gray is a graduate of Laurentian University.

Paul Berndt, Director

Mr. Berndt is a resource development executive with extensive experience in taking projects to production, in particular, tungsten projects. He has a background in mineral process engineering and over 45 years' experience. His expertise includes public company management roles, project development and process engineering as well as stakeholder relations. He has managed many small to medium-sized projects from conception to production, with attention to safety and sound environmental practices.

Michael Cathro, P. Geo., Director

Mr. Cathro's career includes exploration with major and junior resource companies and 17 years with the B.C. Ministry of Energy and Mines in technical and management roles. Mr. Cathro has served as VP Exploration and Director of several Jr. resource companies.



LOCATION

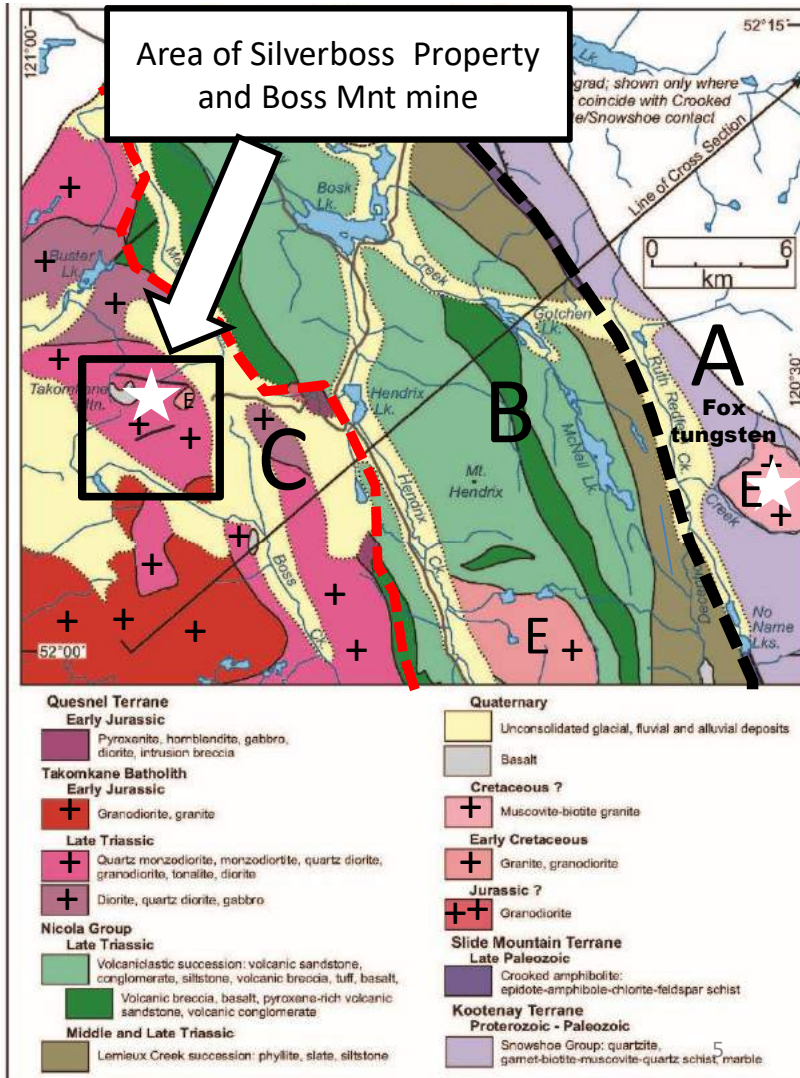
Silverboss Property Infrastructure

Town of 100 Mile House & Highway 97

Roads Power/Energy
Rail Water Labour

- Proximity to past-producing molybdenum mine
- Recent forestry, logging providing new access
- CN rail to Pacific port at North Vancouver





Regional Geology and Setting

General Features

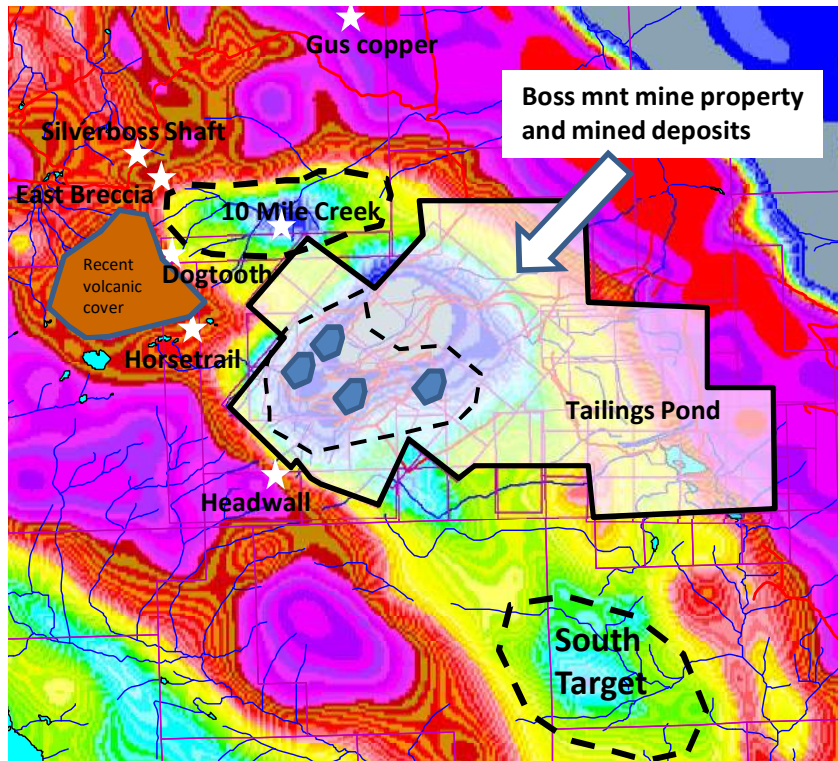
- E) Early Cretaceous monzogranite , two mica granite
- D) Early Jurassic mafic intrusions
- C) Takomkane Batholith: granodiorite, granite
 - Late Triassic intermediate intrusions
- B) Late Triassic Nicola Group: Volcanic, intrusive and sedimentary rocks
- A) Early Cambrian-Devonian Snowshoe Group: Gneiss, schist, calc silicate, marble

The Takomkane Batholith underlies the Silverboss property.

This batholith is host to Consolidated Woodjam's copper-moly-gold property (227m tonnes of 0.31% Cu) located about 25 km to the west-northwest.

- ■ Eureka Thrust- Continental scale suture between the allochthonous Quesnel Terrane Unit B and Unit A

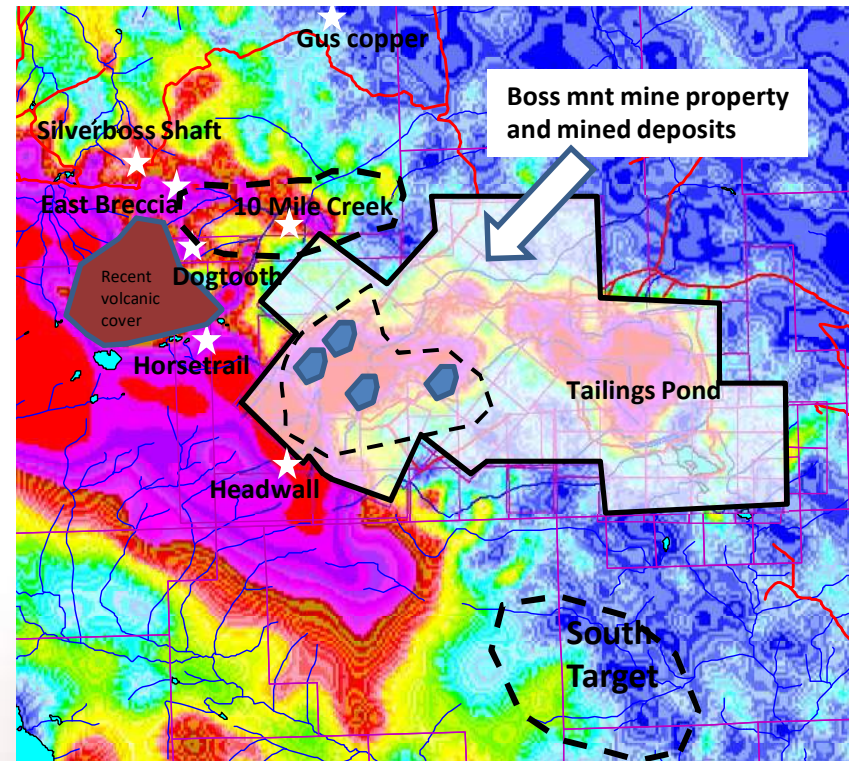
Silverboss Property 2005 Airborne geophysics and main prospects



2005 Airborne Magnetics

Blue-green-yellow colors represent lower magnetics.

At Boss mountain mine this is due to hydrothermal biotite alteration,

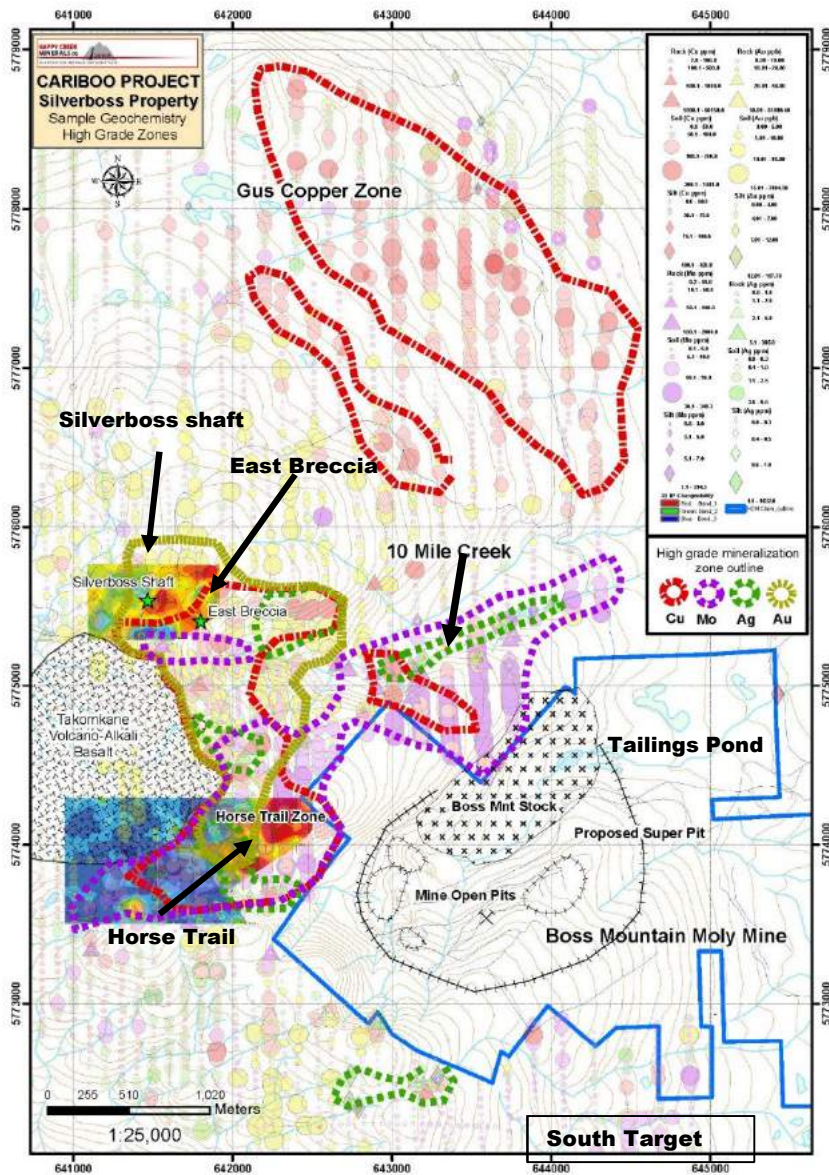


2005 Airborne Potassium

Red-purple colors represent higher potassium. The blue (lower potassium) can be caused by poor rock exposure, deep glacial till, water saturated soils, swamps etc. ie) poor data.

Boss Mountain mine: positive potassium + magnetic low.

Silverboss property – similar features at 10 Mile Creek and south target (glacial till subdues response)



Silverboss Property

General description of the main mineral prospects

Horse Trail: West-northwest of open pits. Outcropping rocks with quartz-pyrite+ copper-moly-gold-silver veins and sheeted low-sulphide quartz veins. Strong IP chargeability at depth.

10 Mile Creek: North of mine property and Boss Mnt stock. Magnetic low, positive tungsten, molybdenum in soil and rocks. Potential for a different Cretaceous stock and molybdenum porphyry under 10 Mile creek.

Silverboss Shaft/ East Breccia and Dogtooth: Gold, silver, copper around feldspar porphyry dykes. IP geophysics support a large-scale target.

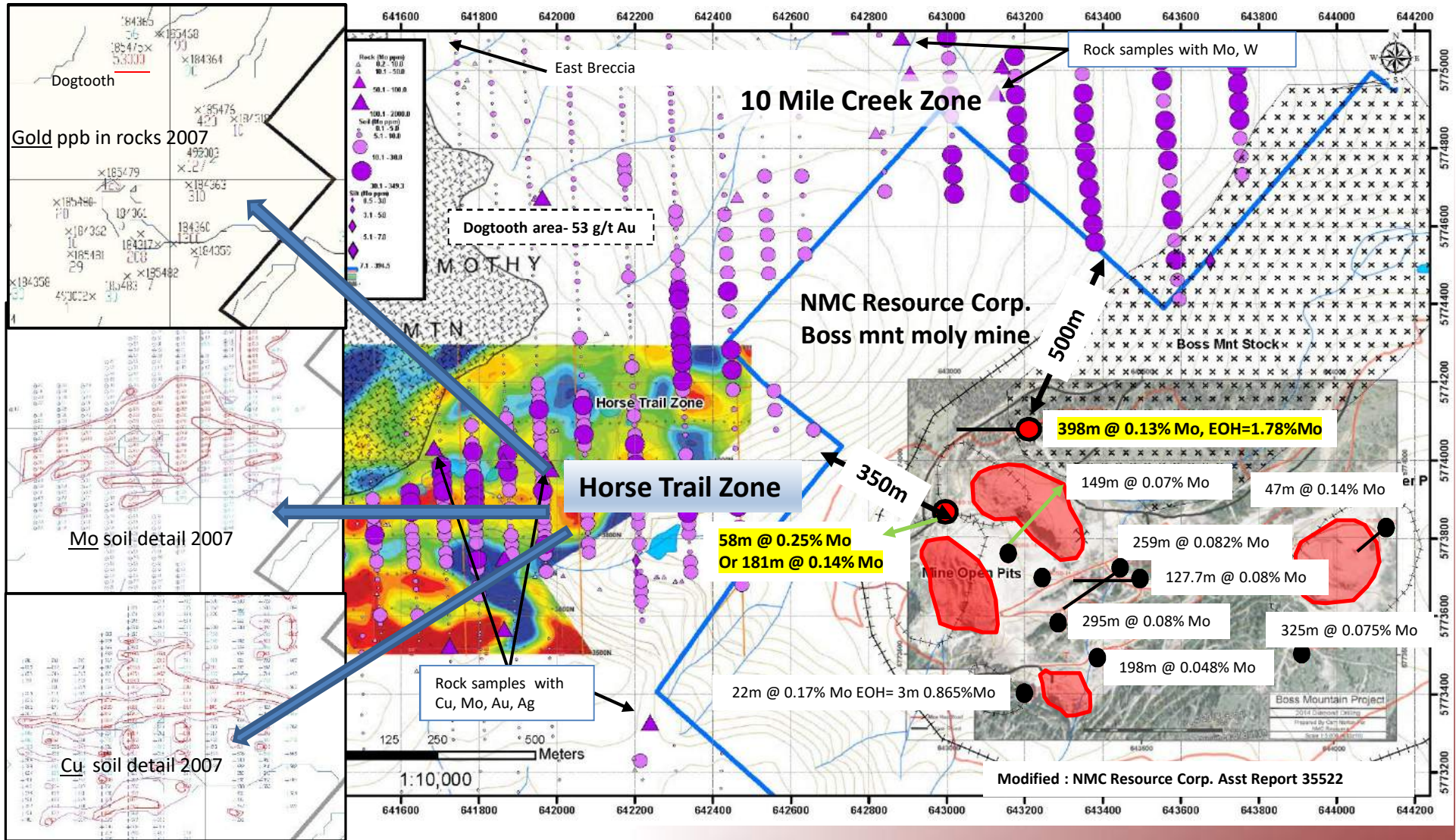
Gus: A 2.5 km long copper in soil anomaly associated with higher magnetics. Extensive glacial till cover- no bedrock exposure.

South Target: Magnetic low, thick blanket of glacial till, partial coverage of soil sampling with local positive copper, gold in soil and boulders. On same trend with 10 Mile Creek, Boss Mountain mine magnetic lows.

Boss Mountain molybdenum mine is Canada's first primary moly producer with very limited exploration outside the pit areas. It closed due to low moly prices in 1984. A substantial resource is reported to remain. In 2004 Noranda allowed peripheral claims of the mine to lapse, and were staked by Happy Creek.

NMC Resource Corp. (now private) optioned the property from Xstrata/Glencore and conducted diamond drilling with results published in 2014. All holes contained mineralization with several notable results.

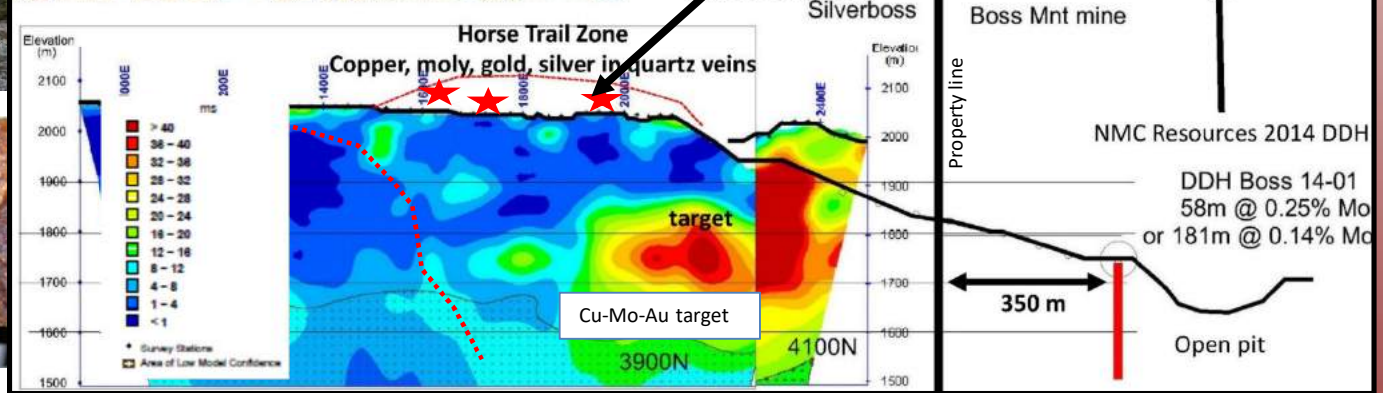
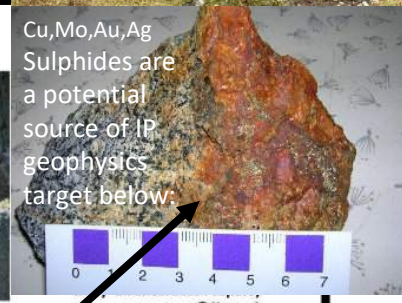
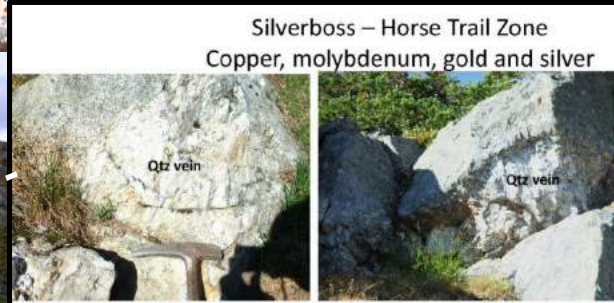
**Silverboss Property
molybdenum in soil and rocks**



500m

The reader is cautioned that results or information from an adjacent property does not imply similar results or outcomes does or will occur on the subject property. Historical information from the subject or adjacent property cannot not be relied upon as the Company's QP, a term which was created and defined under NI-43-101 has not prepared nor verified the historical information

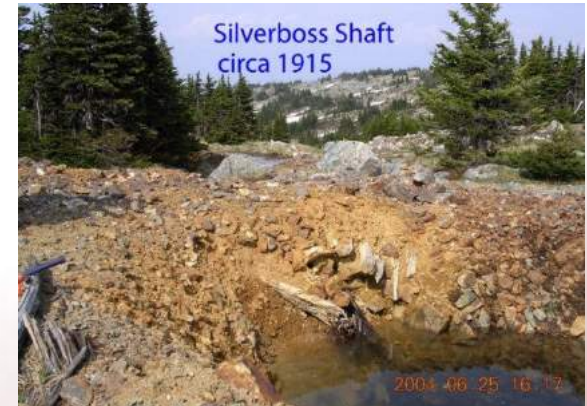
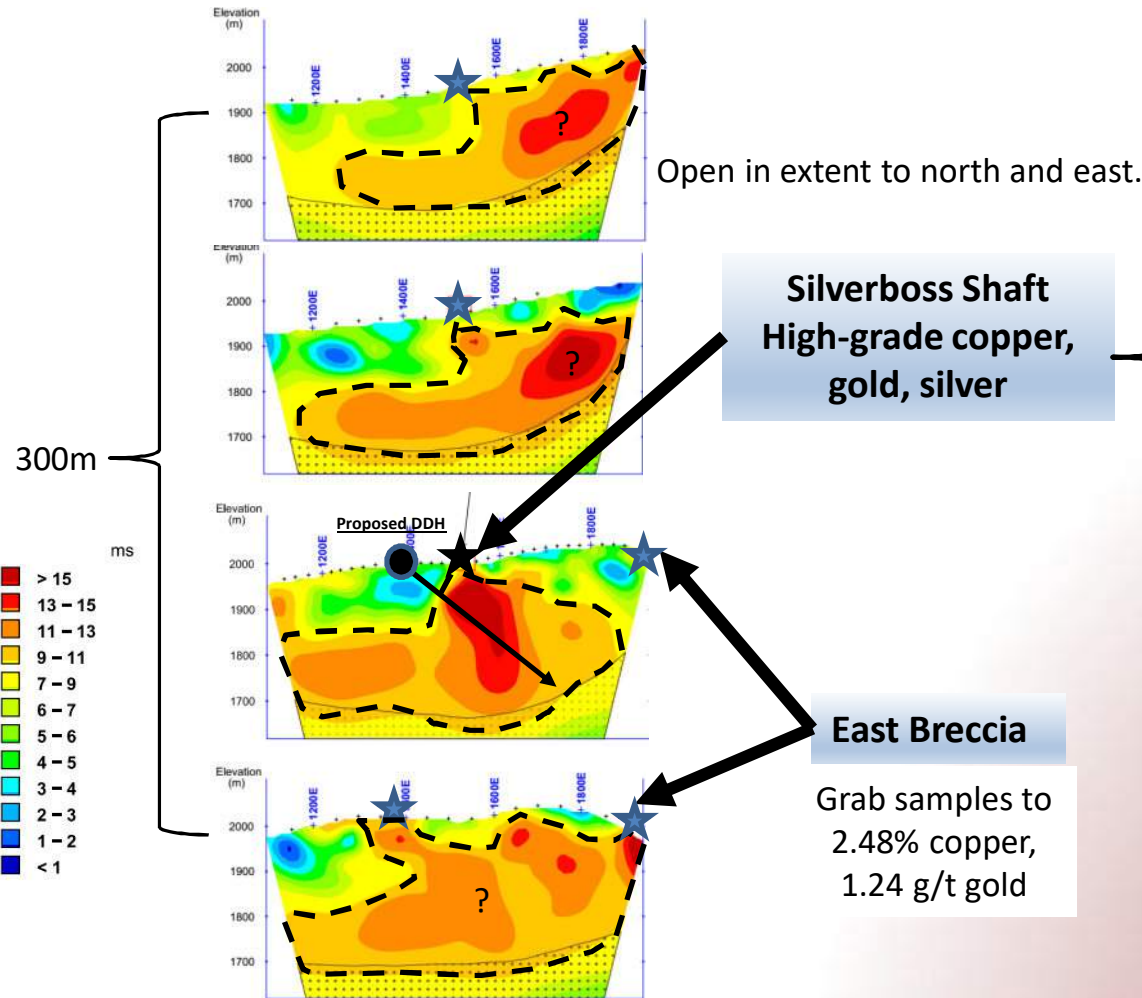
**Silverboss Property- Horsetrail zone
Copper/moly/gold in soil and rocks**



The reader is cautioned that results or information from an adjacent property does not imply similar results or outcomes does or will occur on the subject property. Historical information from the subject or adjacent property cannot not be relied upon as the Company's QP, a term which was created and defined under NI-43-101 has not prepared nor verified the historical information

**Silverboss Property- Historical Shaft zone
Copper/moly/gold in soil and rocks**

Silverboss shaft copper-gold drill target



Cu,Au,Ag sulphides are a potential source of the IP geophysical target below surface (to left).



**Shaft dump grab
samples:
to 6.7% copper,
2.92 g/t Au,
443 g/t Ag**

Silverboss Shaft Zone Induced Polarization
vertical sections looking north (2012)

Next step: Drill test for a bulk tonnage copper-gold discovery

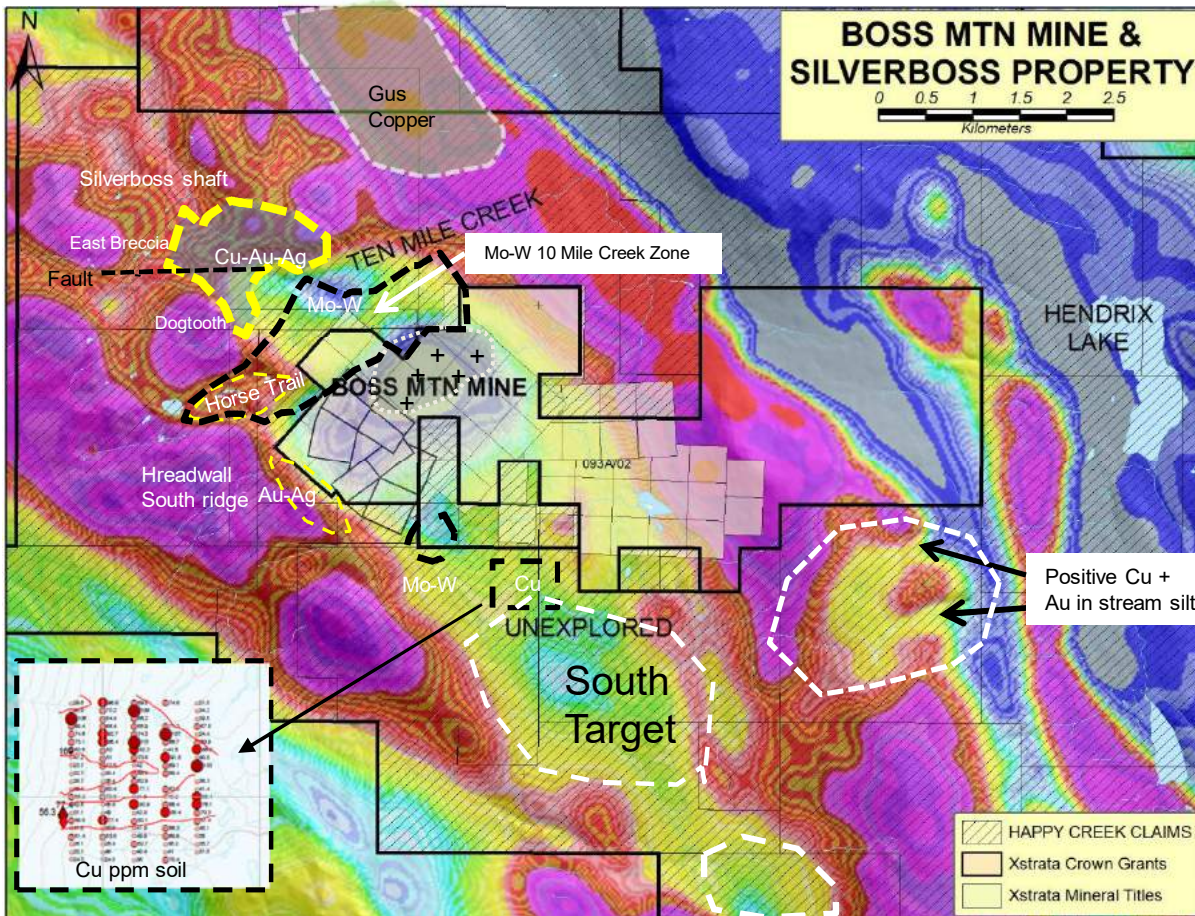
Dogtooth area- above 10 Mile Creek
Grabs to **53.0 g/t Au, 365 g/t Ag** or +/- 10.0 g/t Au over 1.0m



**10 Mile Creek- andesite dykes , py +moly-tungsten, gold
25m grab sample 0.05% W03**

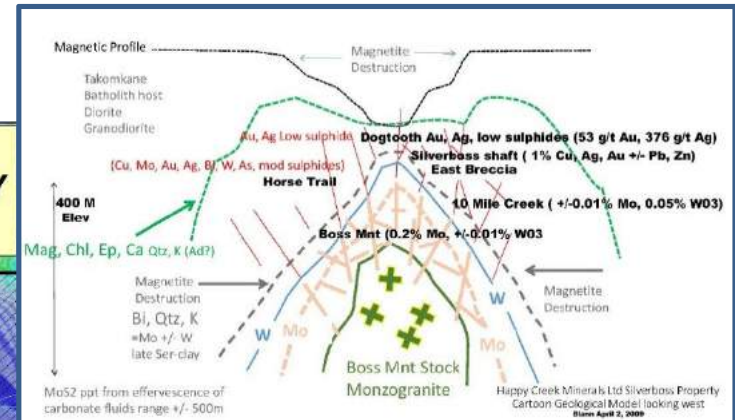
**Horse Trail Zone sheeted quartz veins:
high and low sulphide, gold-Bi bearing**

Silverboss property

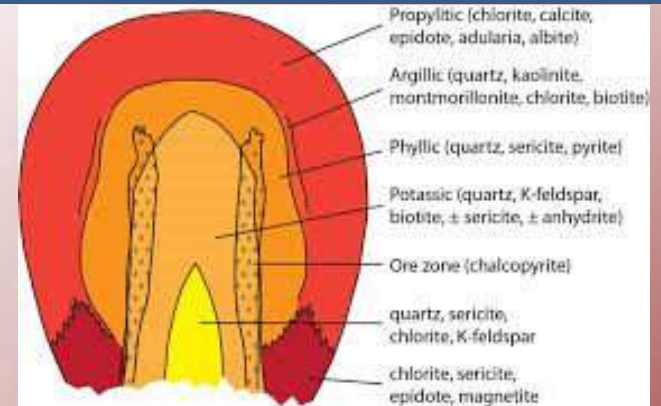


**Silverboss: Two ages of mineral deposits:
Cu-Mo-Au with uTr-IJr Nicola system
Mo-W with Cretaceous age Boss Mnt stock**

Developing deposit models



**Mo → W → ? Epithermal Au-Ag +/- Cu ?
continuum from carbonate rich fluid & cooling**



Or: Triassic-Early Jurassic calc-alkaline Cu-Au followed by Cretaceous Mo-W ?

Silverboss Property Summary

Large scale mineral system with excellent infrastructure and location
 Drill-ready targets
 Opportunity to discover bulk-tonnage copper-moly-gold-silver deposits

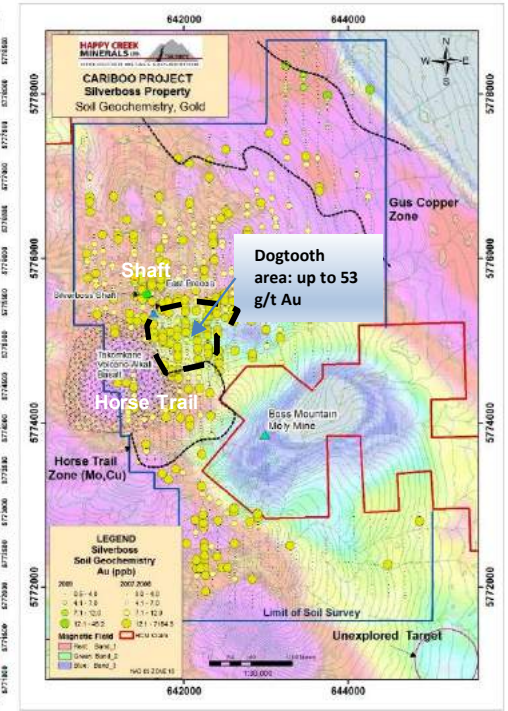
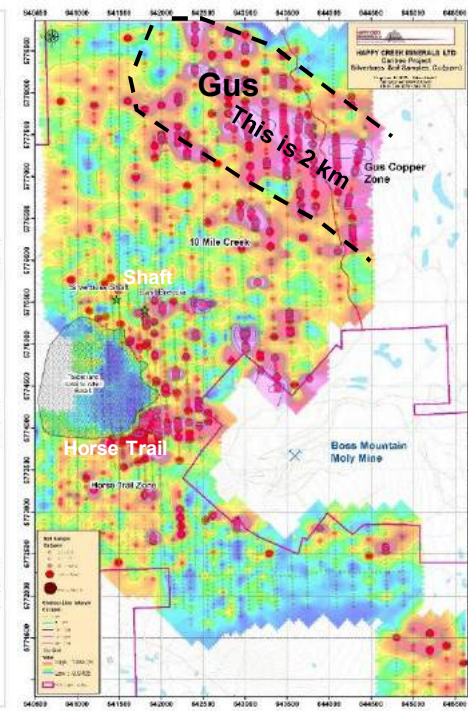
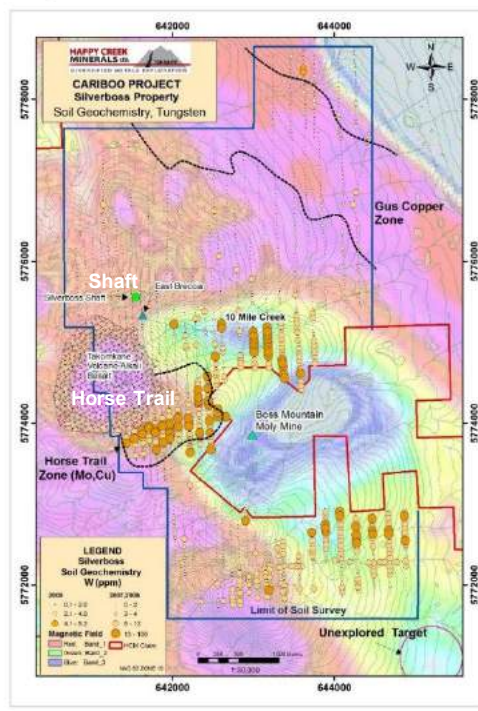
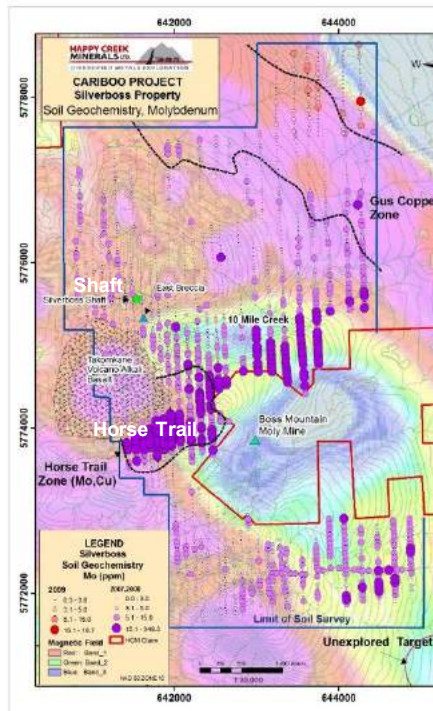
In February 2019, a major mining company recently staked 500 sq km adjoining the west side of Silverboss property

Molybdenum

Tungsten

Copper

Gold



CONTACT

Happy Creek Minerals Ltd.

Suite 460-789 West Pender Street

Vancouver, B.C. Canada V6C 1H2

Email: info@happycreekminerals.com

Website: www.happycreekminerals.com

David Blann, P.Eng. President, CEO

James Berard, Corporate communication

Phone: 1-604-662-8310

Toll Free: 1-877-662-8310

April 30 2019

Shares outstanding: 93,665,976

Warrants: 547,991 @ avg. \$0.30

Options: 5,600,000 @ avg. \$0.21

Year High: \$0.20

Year Low: \$0.11