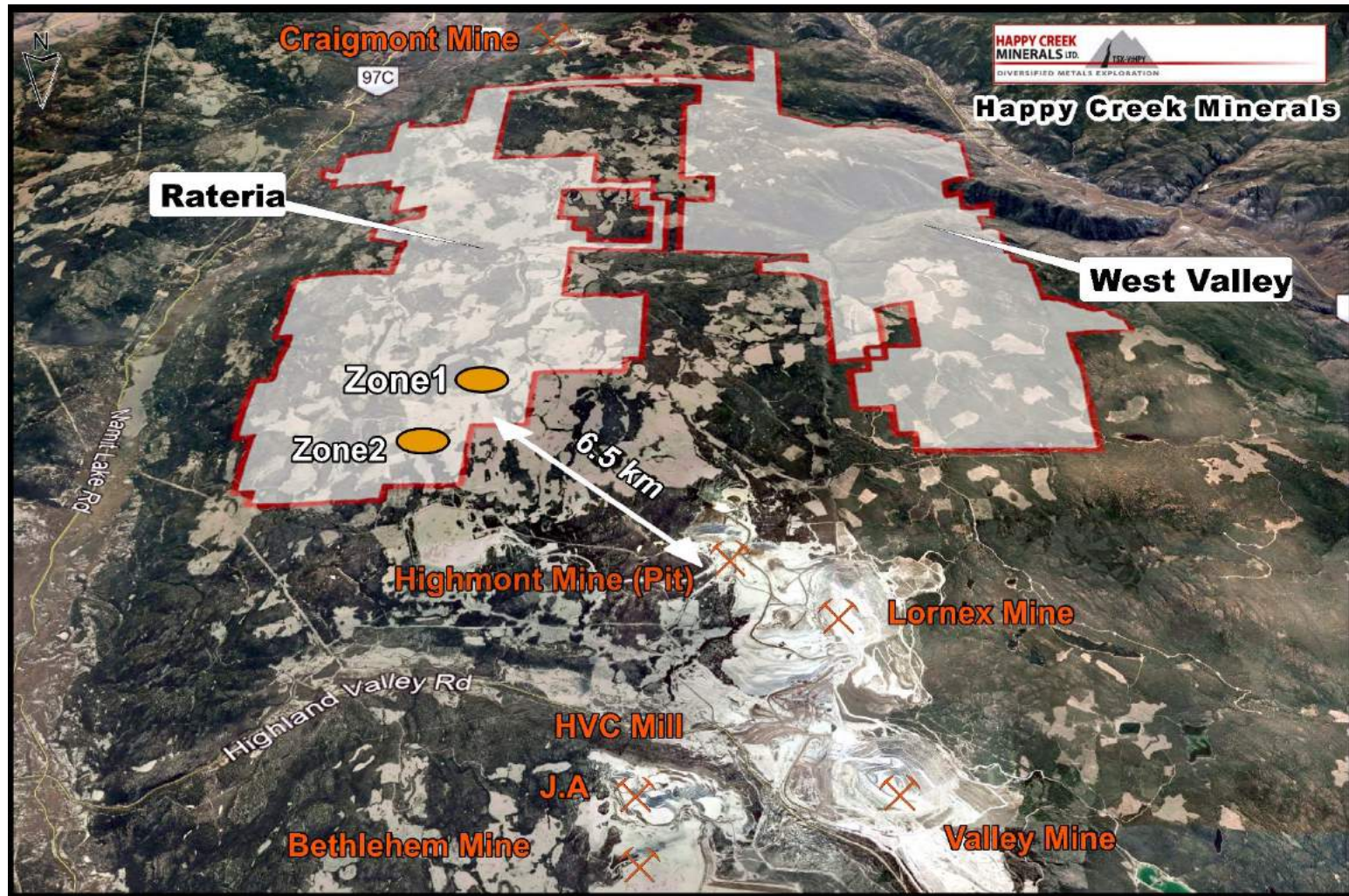


# The Rateria and West Valley Property

*Exploring for copper near Canada's largest copper producer  
Highland Valley area, B.C.*



*Neither the TSX Venture Exchange nor its Regulation Services Provider (as that term is defined in the policies of the TSX Venture Exchange) accepts responsibility for the adequacy or accuracy of this presentation. The information provided is believed to be reliable however no assurance as to its accuracy, completeness or timeliness is represented herein.*

*This presentation may contain statements and projections such as plans, forecasts, prices, resources, profits, value, scale, and others that are forward looking and subject to risks and uncertainties more fully described in the Company's Prospectus, Financial Statements and Public Filings located on SEDAR. \$ are U.S. currency unless otherwise noted. "Diversified Metals Exploration" and the Company's logo and images are trademarks and copyright of Happy Creek Minerals Ltd. All Rights Reserved. David E. Blann, P.Eng., Director, is a Qualified Person under NI-43-101 has approved the technical content of this presentation.*

*Under NI43-101 (2001), the reader is cautioned that results or information from an adjacent property does not infer or indicate similar results or information will or does occur on the subject property. Historical information from the subject or adjacent property cannot not be relied upon as the Company's QP, a term which was created and defined under NI-43-101 has not prepared nor verified the historical information.*



**David Blann, P.Eng, President, CEO, Director**

Mr. Blann has engaged in precious and base metal exploration, development and production stage projects for 30 years, with a background in mining engineering technology and geological engineering. He has experience as Director and VP Exploration for several Jr. public companies, and is the founder of the Company in 2005.

**Richard Lee, CMA, Chief Financial Officer**

Mr. Lee has spent the past 30 years in public corporate accounting practice with and for publicly listed TSX companies, and has a wealth of financial, accounting and business experience. Mr. Lee has been involved with numerous startup companies in Canada and those registered with the SEC in the United States.

**Walter Segsworth, Director, Chair**

Walter Segsworth has over 40 years of experience in mining in Canada and overseas and has served as a senior officer of several mining companies including Westmin Resources, where he was President and CEO, and Homestake Mining Company, where he was President and COO. Mr. Segsworth is currently lead independent director of Pan American Silver and a director of Sabina Gold & Silver Corporation. Mr. Segsworth is past Chairman of both the Mining Associations of British Columbia (BC) and Canada and was named B.C.'s Mining Person of the year in 1996.

**Rodger Gray, Director**

Mr. Gray has over 20 years of experience as a stockbroker and officer of an IDA member firm. Mr. Gray is currently with Wellington-Altus Securities in Toronto, and was until recently, the President and Chief Executive Officer of Toll Cross Securities Inc., a Toronto-based, full-service broker dealer specializing in the junior resource sector. Mr. Gray has previously acted as a Director and Vice-President investment banking, institutional equities, with First Associates Investments Inc. and prior thereto as President of St. James Securities Inc. Mr. Gray is a graduate of Laurentian University.

**Paul Berndt, Director**

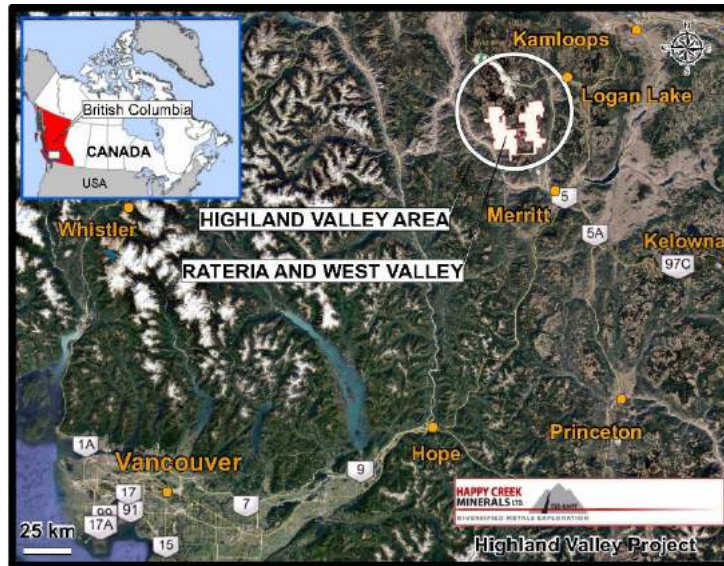
Mr. Berndt is a resource development executive with extensive experience in taking projects to production, in particular, tungsten projects. He has a background in mineral process engineering and over 45 years' experience. His expertise includes public company management roles, project development and process engineering as well as stakeholder relations. He has managed many small to medium-sized projects from conception to production, with attention to safety and sound environmental practices.

**Michael Cathro, P. Geo., Director**

Mr. Cathro's career includes exploration with major and junior resource companies and 17 years with the B.C. Ministry of Energy and Mines in technical and management roles. Mr. Cathro has served as VP Exploration or Director of several Jr. resource companies.

**Sassan Liaghat, PhD, Project Manager/ Senior Geologist**

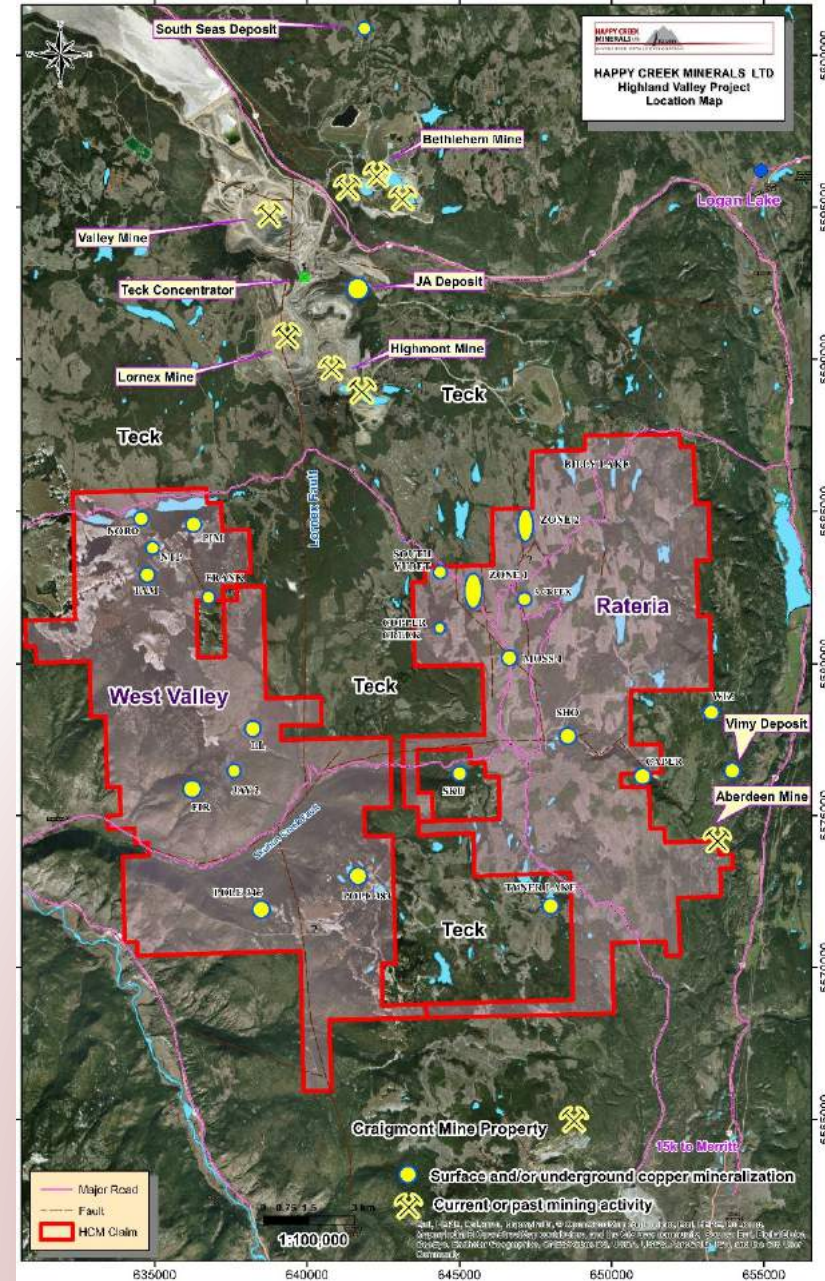
With a background in technical research, MDRU at UBC, Mr. Liaghat has experience as an exploration geologist with several companies including NovaGold Resources and the HDI Group. Mr. Liaghat performs project field management roles and manages the Company's geological database and GIS systems.



### 100% Owned Rateria & West Valley Property

- Proximity to the Highland Valley Copper mine- Canada's largest open pit copper mine and the past-producing high grade Craigmont copper mine to the south.
- Excellent infrastructure, year-round exploration access with moderate climate, terrain and recent intensive forestry activity/roads and openings.
- First to assemble this land package.
- Low cost exploration in a highly productive geological setting.

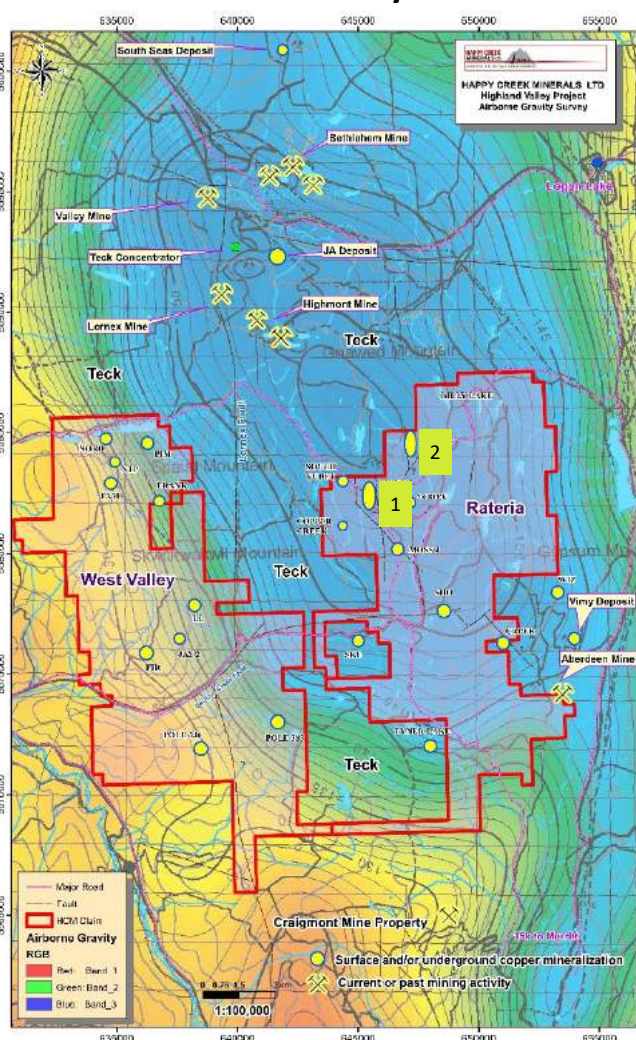
## LOCATION



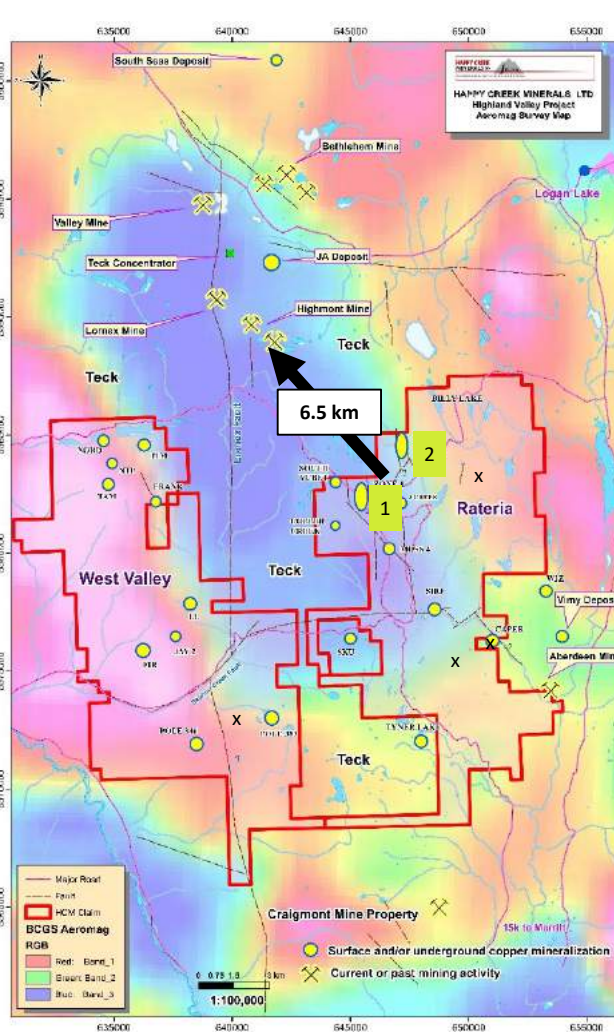


Recent advances in geological knowledge of porphyry copper deposits has led to (or from) stunning global discoveries- even in previously explored areas around existing copper mines:  
They can be large and much higher grade than expected.

## Gravity

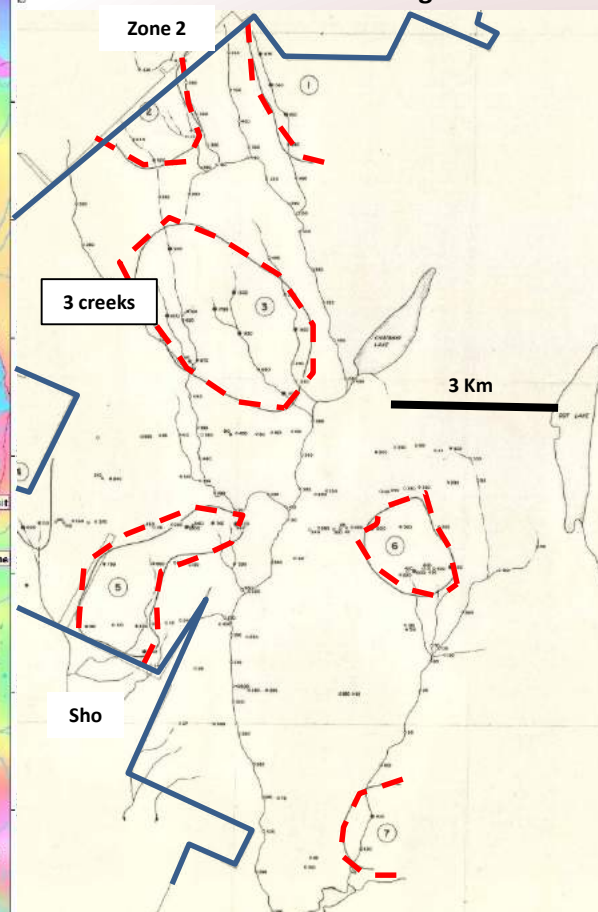


## Magnetics



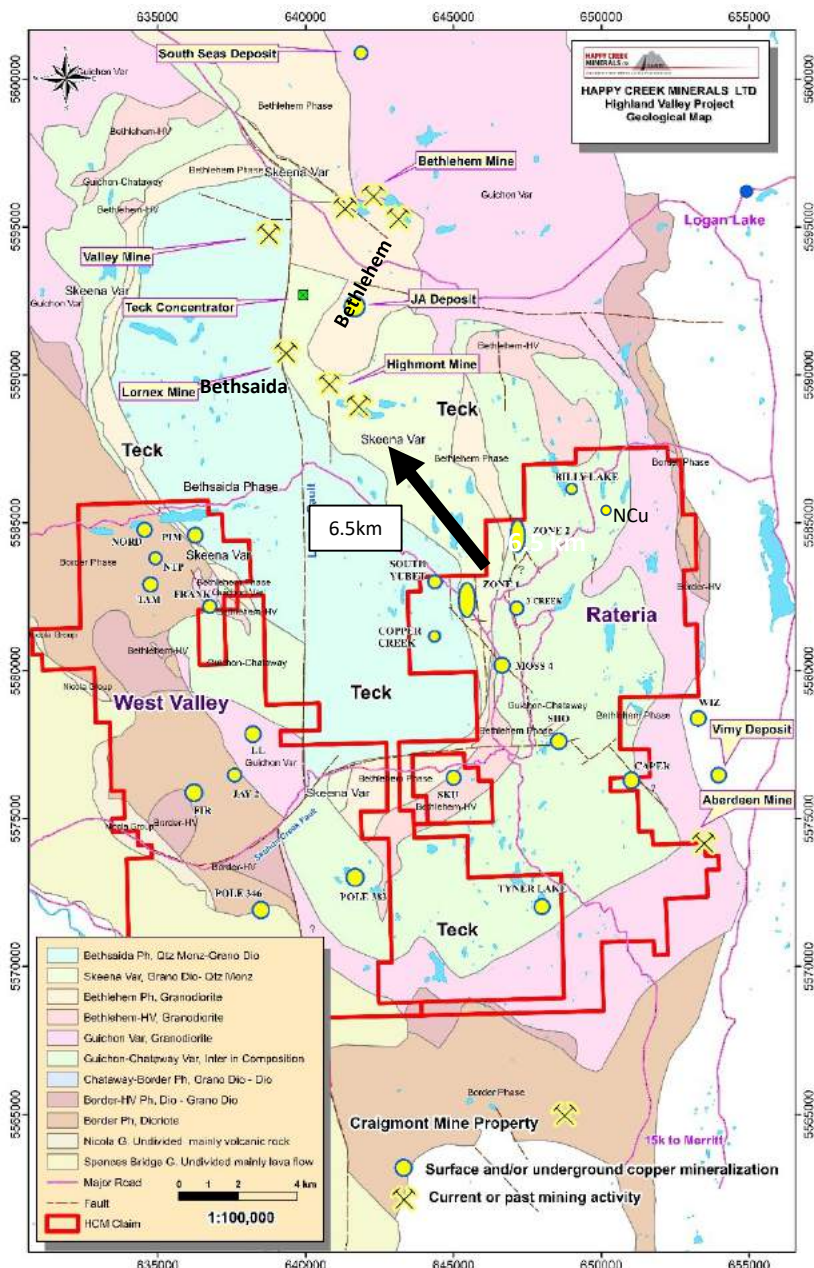
## Geochemistry

Historical work limited by irregular shaped, smaller claim areas and glacial till.





# HIGHLAND VALLEY GEOLOGY



The Guichon Batholith hosts 4 large porphyry copper producers plus the large JA deposit (beneath >150m of glacial till) to the north. These are within the Bethsaida, Skeena and Bethlehem phases which also occur on Happy Creek's property. The former Craigmont copper mine to the south is a skarn.

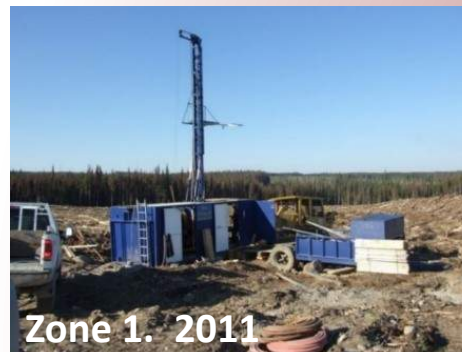
Batholith-hosted calc-alkaline porphyry systems are relatively deeply formed and can produce among the largest deposits having variable styles and depth of formation.

Historical exploration effectiveness was limited by 85-95% glacial till cover, densely tree-covered terrain, and patchwork claim groups.

Today, with a large contiguous land package, recent logging road construction improving access and bedrock exposure, applying modern porphyry copper technique and tools, there is real opportunity for new discoveries.

Zone 1 and 2 were found by recognizing geological relationships and drilling modern induced polarization geophysical targets.

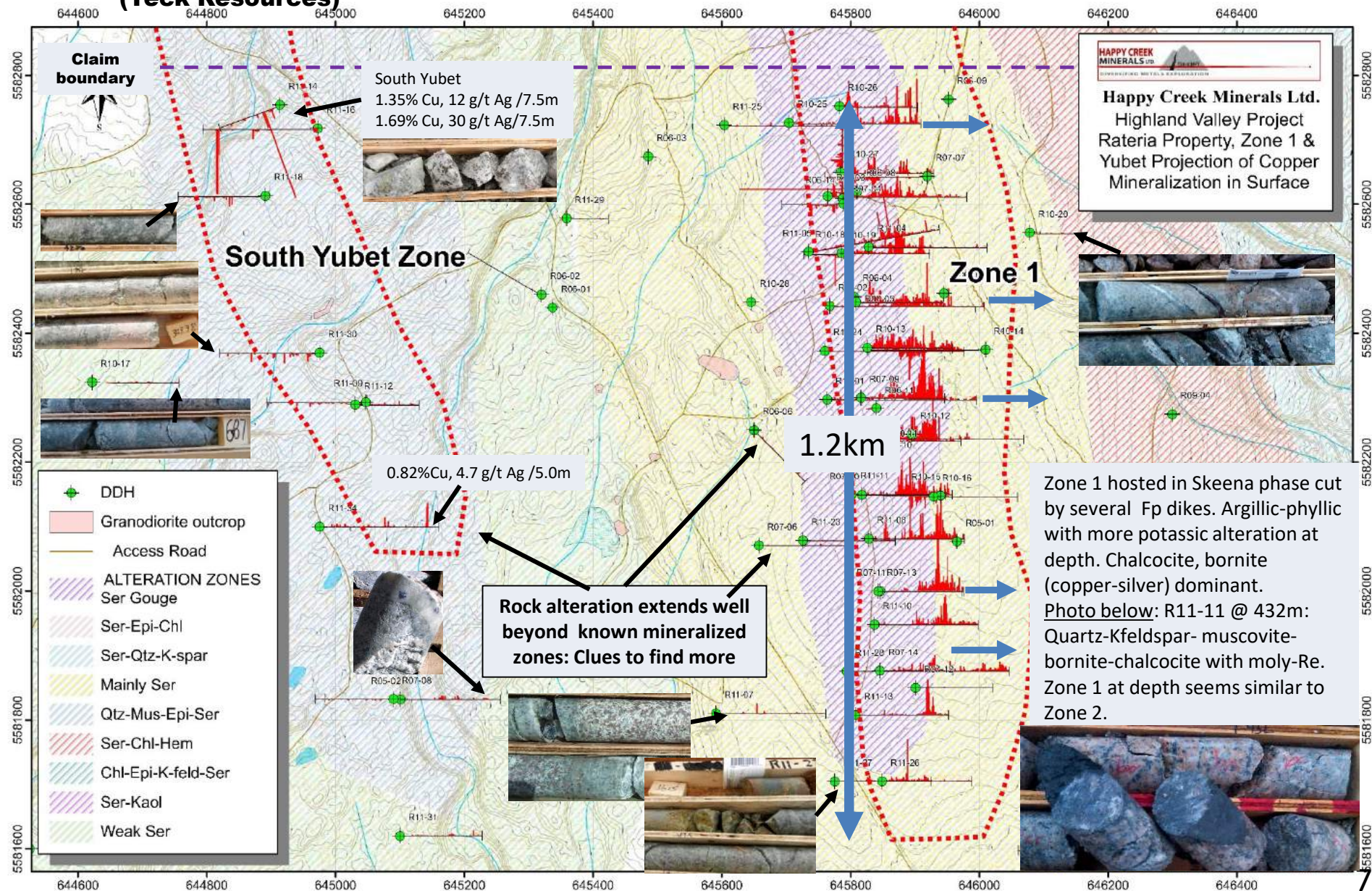
Some 25 known copper prospects have received limited work and warrant more detailed investigation.



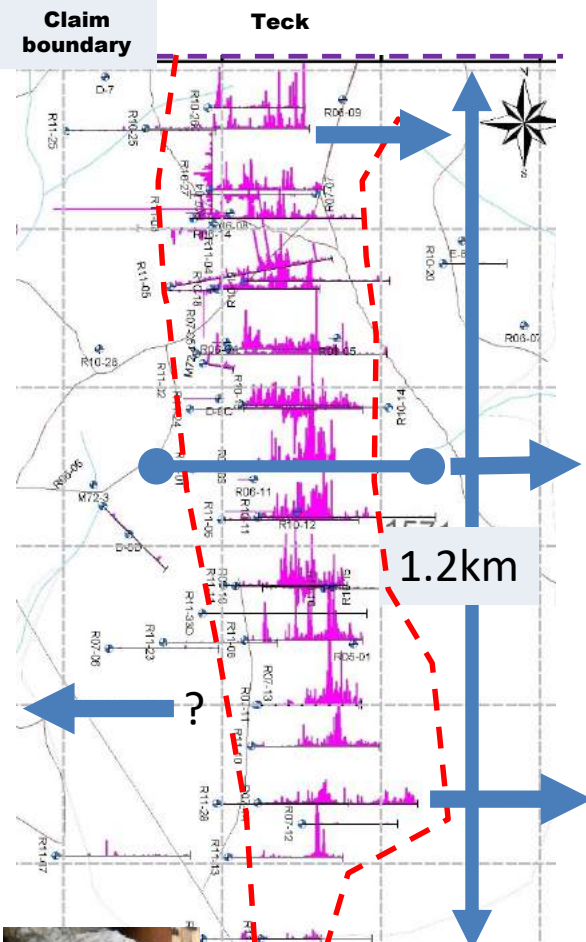
**Since around 2004, accelerated logging due to Pine Beetle affected trees has opened up vast areas with improved access.**



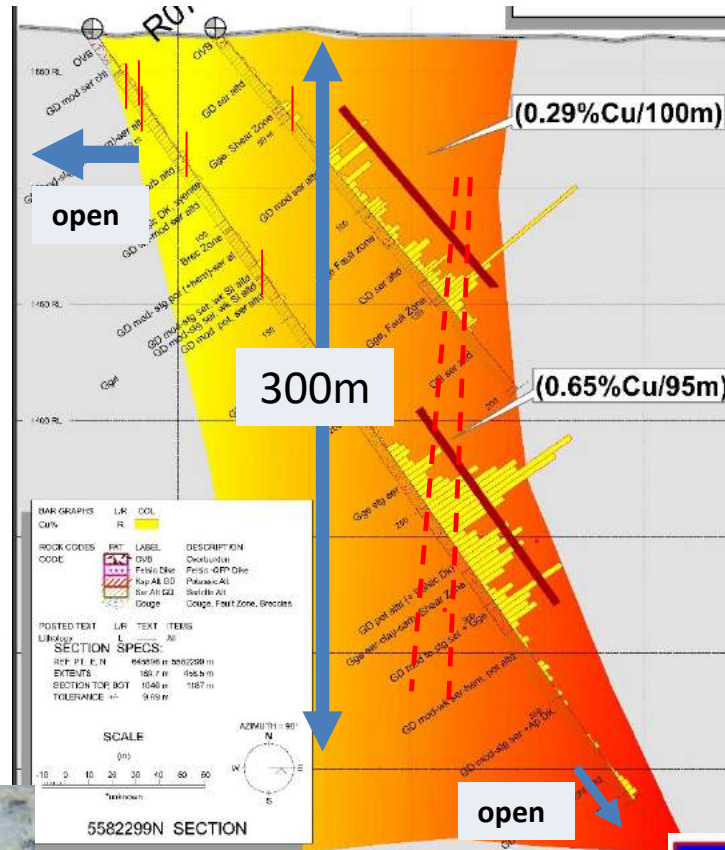
## Yubet prospect (Teck Resources)







- Good metallurgy: Low pyrite and high-grade chalcocite-bornite minerals.**
- High recovery, clean concentrate with 39.6% copper 398.6 g/t silver.**



## Some DDH Highlights

Hole	Interval (metres)	Cu %	Ag g/t
R07-9	100.0	0.29	1.0
R07-13	189.3	0.22	1.3
R10-12	236.2	0.27	1.0
R10-13	145.3	0.25	1.3
R10-18	250.6	0.18	1.3
R10-25	77.5	0.31	3.3
R11-1	95.0	0.65	3.6
R11-2	157.5	0.19	1.1
R11-3	257.8	0.15	1.3
R11-6	100.0	0.35	2.2
R11-8	250.0	0.25	1.6
R11-11	242.5	0.25	1.6
includes	102.5	0.43	2.9

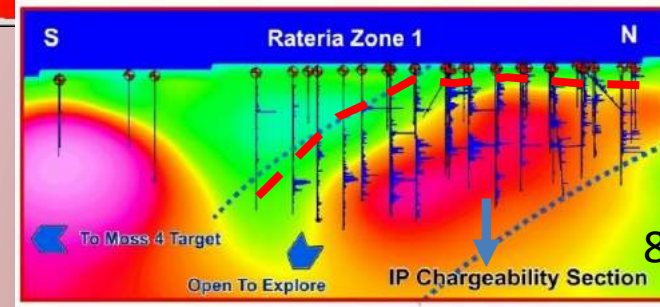


**Chalcocite (79% Cu)**

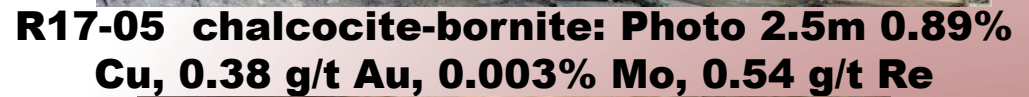


**bornite (63% Cu) with quartz-muscovite/sericite**

**Zone 1 is resource estimate-ready and still open. Mineralization is related to a large structure in argillic-phyllic altered Skeena unit-may continue to great depth and could expand in size. Potential for >1 km vertical mineralized zone.**







**R11-36 K-spar-qtz-sericite veins and bornite. Photo 2.5m 1.11% Cu, 0.46 g/t Au, 0.031% Mo, 0.80 g/t Re**



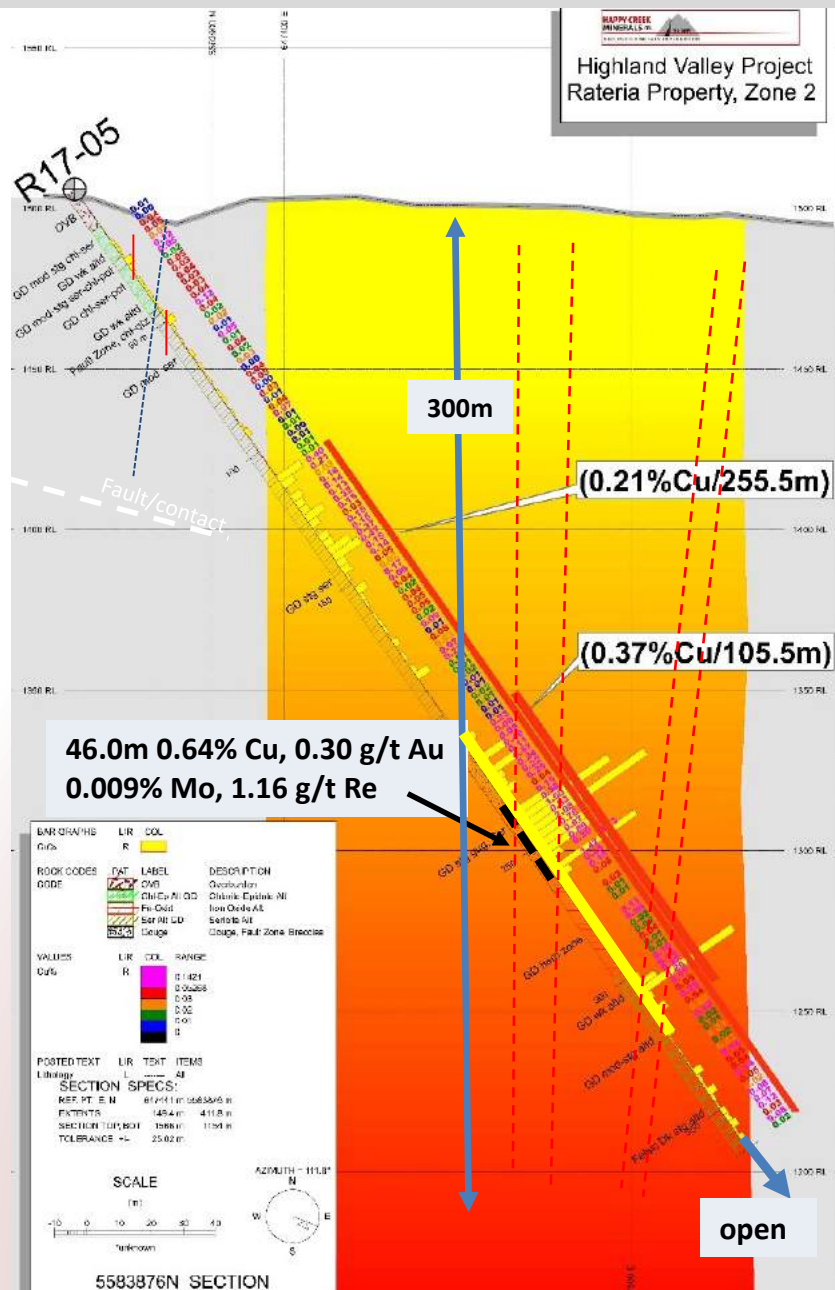
### ZONE 2 DDH Highlights

Zone 2 Hole	Interval (m)	Cu %	Ag g/t	Mo %	Au g/t	Re g/t
R08-01	113.0	0.33	1.48	0.002	0.05	N/A
R08-05	126.0	0.46	1.71	0.008	0.10	N/A
R09-06	92.4	0.12	1.23	0.011		0.76
includes	20.2	0.18	0.80	0.048	0.04	3.45
R09-07	48.0	0.30	1.60	0.002	0.07	0.26
R12-01	92.81	0.30	1.50	0.005	0.15	0.02
includes	12.5	0.63	3.2	0.001	0.66	0.01
R12-02	152.5	0.35	1.70	0.004	0.06	0.57
includes	32.5	0.91	4.0	0.011	0.12	1.83
R17-02	5.0	4.41	20.0	0.031	0.21	6.86
R17-05	105.5	0.37	1.90	0.005	0.14	0.63
R17-08	82.5	0.29	1.25	0.003	0.06	0.17
and	66.0	0.35	1.64	0.002	0.02	0.23

Happy Creek is the first in the highland Valley area to announce rhenium in drill results. Presence of gold and high rhenium enrichment in molybdenite is similar to B.C. copper-gold porphyry style copper deposits and provides new opportunity for exploration.

Zone 2 contains encouraging grade hosted in large structures with phyllic-potassic altered Chataway/Bethlehem rocks cut by porphyry dikes. Drill holes ending in Cu-Mo mineralization suggest the zone is open to depth and part of a large mineral system.

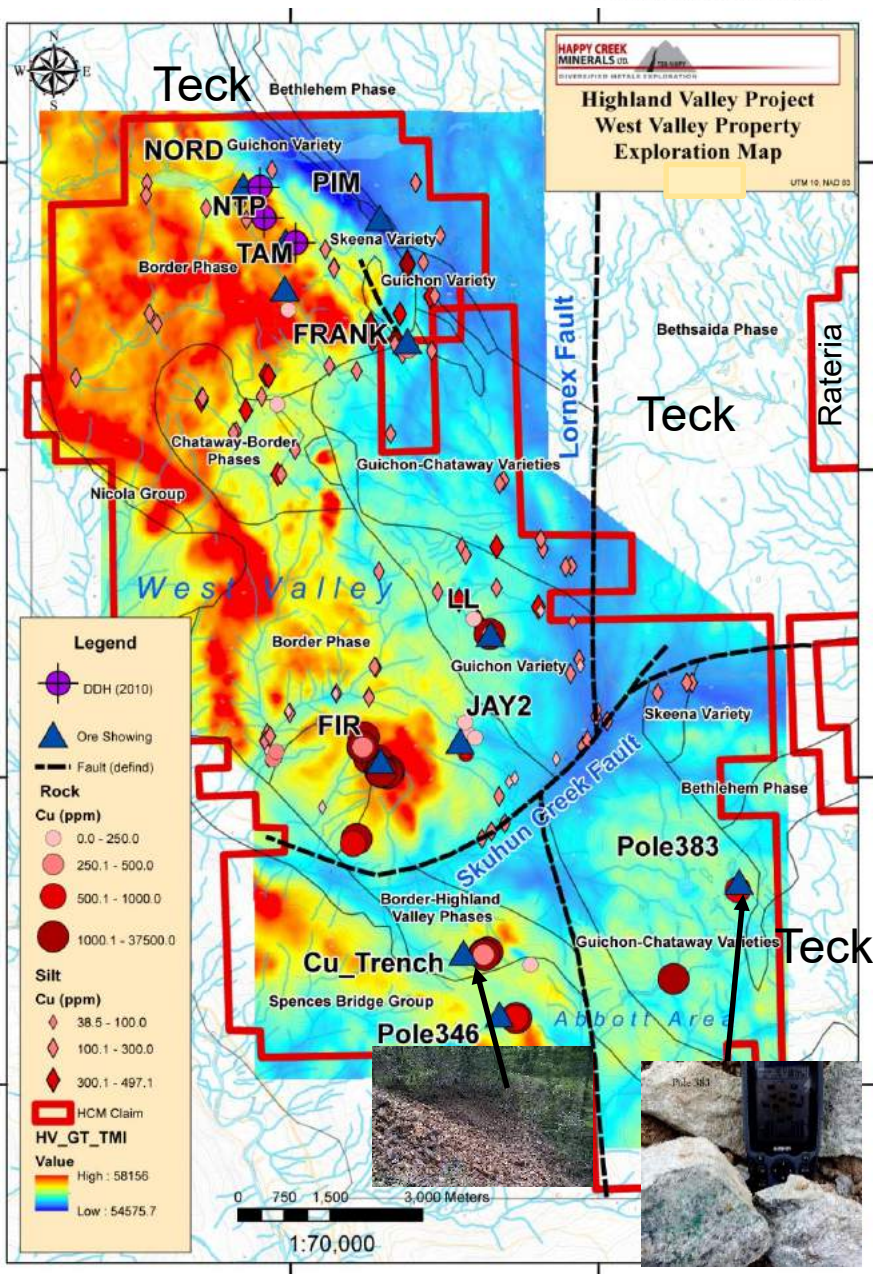
## ZONE 2 DISCOVERY





## Consolidated 100 square kilometres

- **Adjacent the Lornex Fault, a major feature at the Lornex and Valley deposits to the north.**
- **Historically intermittent, cursory surface work in small patchwork claims. Area is mostly covered by glacial till.**
- **New logging roads and clear cuts have resulted in improved access and new copper showings.**
- **Happy Creek's detailed airborne geophysics, geochemistry assist to identify geology, structures and alteration.**
- **Modern technology and geological work are beginning to resolve exciting targets. Abbott area shows copper skarn potential.**
- **Excellent potential for new discoveries.**





- **Rateria and West Valley: 200 Sq Km, 100% owned and underlain by proven geology.**
- **Zone 1 and Zone 2 are new copper discoveries in Highland Valley and open to expand.**
  - **Zone 2 has elevated gold, rhenium values- opens another door for exploration**
- **Surface is mostly covered by glacial till – limited historical exploration effectiveness**
- ***Positive signs* for large-scale mineral systems with potential for multiple deposits.**

**There are 5 deposits that achieved production in the district.  
Prime geological conditions for quality copper deposits  
A solid copper exploration asset in a low-risk jurisdiction.**





**Shares outstanding: 92,218,997**  
**(Registered/Certificated:18,353,191)**  
**Warrants: 6,336,546 @ avg. \$0.17**  
**Options: 5,700,000 @ avg. \$0.21**  
**Year High: \$0.25**  
**Year Low: \$0.15**

## **Happy Creek Minerals Ltd.**

Suite 460-789 West Pender Street

Vancouver, B.C. Canada V6C 1H2

Email: [info@happycreekminerals.com](mailto:info@happycreekminerals.com)

**Website: [www.happycreekminerals.com](http://www.happycreekminerals.com)**

**David Blann, P.Eng. President, CEO**

**Phone: 1-604-662-8310**

**Toll Free: 1-877-662-8310**





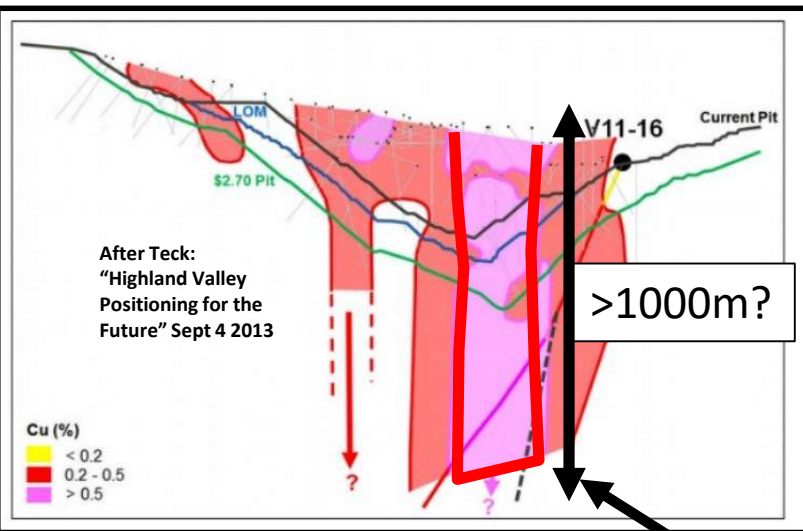
The Highland Valley Copper operation is owned 100% by Teck Resources Limited

This operation involves blending ore from three different open pits.

Probable/Proven reserves of 546.6m t average 0.29% copper, 0.007% molybdenum and the mill processed approximately 52mt in 2017.

A \$72 million project to install an additional ball mill to increase grinding circuit capacity was started in September 2017. The project is anticipated to increase overall mill throughput by 5% and copper recovery by over 2%, and is expected to be completed by mid-2019.

Data obtained from public documents or filed on SEDAR



Valley pit drill core  
(late stage quartz-bornite veins cut phyllic-copper mineralization  
see Happy Creek's Yubet South)



Sub-vertical central zone of >0.5% copper extends over 500m below pit.

The deposit extends to great depth and is spatially associated with large fault zones.  
An important consideration for exploration of other deposits in district.