



TSX-V:HPY

HAPPY CREEK
MINERALS LTD.

Silverboss Project, January 2025

Developing Critical Minerals in Western Canada

Forward Looking Statement

Neither the TSX Venture Exchange nor its Regulation Services Provider (as that term is defined in the policies of the TSX Venture Exchange) accepts responsibility for the adequacy or accuracy of this presentation.

This presentation may contain statements and projections such as plans, forecasts, prices, objectives, targets, resources, profits, value, scale, and others that are forward looking and subject to risks and uncertainties more fully described in the Company's Prospectus, Financial Statements and Public Filings located on SEDAR. \$ are CDN currency unless otherwise noted. Resources reported herein conform to NI43-101 with a report filed on SEDAR and can also be viewed on the Company's website. Readers are cautioned that the quantity and grade of reported Inferred resource estimations are conceptual in nature, and there has been insufficient exploration to define these Inferred Resources as an Indicated or Measured Resource. It is uncertain if further exploration will result in upgrading them to an Indicated or Measured Resource category. Mineral Resources that are not Mineral Reserves do not have demonstrated economic viability.

1,2,3 Historical Information is any information collected prior to 2005 that occurs on or adjacent the Property, or more recent information from an adjacent property. The Qualified Person has not completed sufficient work to verify historic information on the Company's or adjacent properties, particularly with respect to historical drilling and other results or production records. However, the Qualified Person believes that historical drilling and analytical results were completed to industry standard practice at the time it was performed, and such information could provide an indication of results but cannot be relied upon due to uncertainties with locations, samples, or analytical and other quality control procedures. Grab and chip samples are localized and selective by nature and may not be representative of a larger area. Results or information from an adjacent property does not infer or indicate similar results or information will or does occur on the subject property.

"Diversified Metals Exploration" and the Company's logo and images are copyright of Happy Creek Minerals Ltd. All Rights Reserved.

David Blann, P.Eng., Director, is a Qualified Person as defined under NI-43-101 has approved the technical content of this presentation.



Happy Creek Minerals Ltd.

- 100%-owned critical mineral projects in proximity to mines and infrastructure, BC
 - Lower-cost exploration, development mining districts
 - Creating mutually beneficial relationships with local Indigenous Communities
- Highland Valley District:
 - 200sq km property with two new copper discoveries
 - adjoins the Highland Valley Copper mine property (HVC) -Canada's largest copper mine)
 - Sold to Metals Energy Corp.
- South Cariboo District:
 - Properties In proximity to the past producing Boss Mnt Moly mine
 - Fox: a new tungsten discovery with globally significant resource grades
 - Silverboss: new gold, copper, moly targets within 500m of the pits
 - Hen: gold skarn
 - DL: gold in quartz veins



Happy Creek Team

Extensive experience with:

- ✓ Discovery
- ✓ Project development
- ✓ BC geology and mineral deposits
- ✓ Permitting
- ✓ Mine operations
- ✓ Community and Indigenous relations
- ✓ Financing and capital markets
- ✓ Public company governance

Jason Bahnsen, MBA, President, & CEO

Richard Lee, CPA, CMA, CFO

Walter Segsworth, Non-Executive Chair

Michael Cathro, Director

David Blann, P.Eng, Director

Rodger Gray, Director

Sarah Weber, P.Geo, Director

C.J. (Charlie) Greig, P.Geo, Advisor

Finley Bakker, P.Geo, Advisor



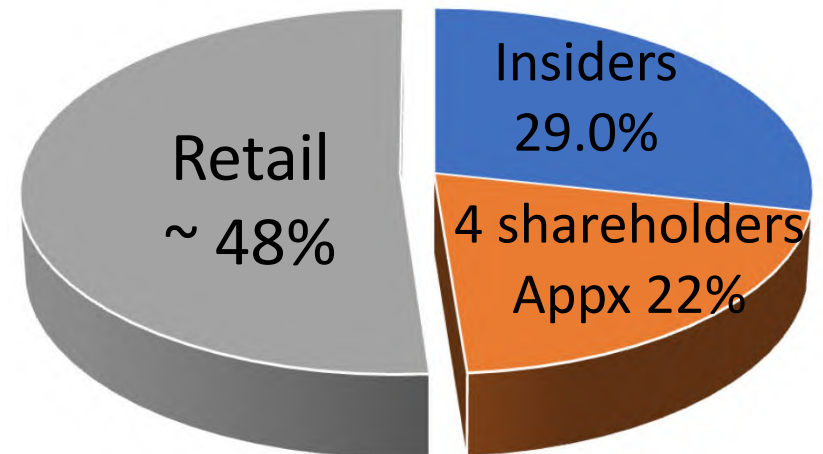
Capital Structure

Management Invested and Aligned with Shareholders



Shares Issued	146.676 m
Warrants- Avg \$0.083 All expire by 02/28/2025	13.36 m
Options- Avg \$0.10, Avg life 2.8 years	15.7 m
Fully Diluted Shares	157.56 m
Recent Share Price	CAD \$0.05
Market Cap	CAD \$7.5 m
TSX:V ticker symbol	HPY

Share Ownership



Canada and B.C. Governments Critical Minerals Strategy

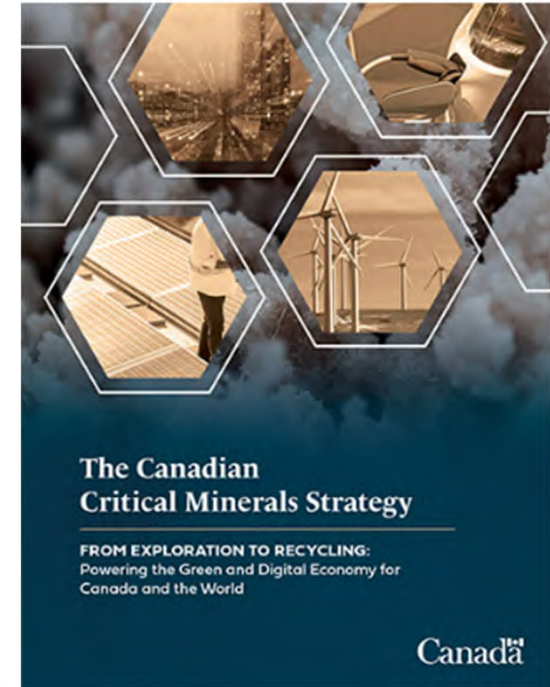
Recognized the importance for a strong economy

Generating greater appreciation and awareness by the general population

- Enhanced investment incentives
- Partnerships with First Nations
- Expedited permitting
- Technical research

Happy Creek's key projects have these critical metals:

- Copper
- Tungsten
- Molybdenum



Our Commitment:

Community Engagement, Safety and Environmental Protection



- Early and regular communication with all stakeholders
- Priority to local employment, training and contracting
- Building trust and partnerships



Reclaiming drill sites



Keep things clean !



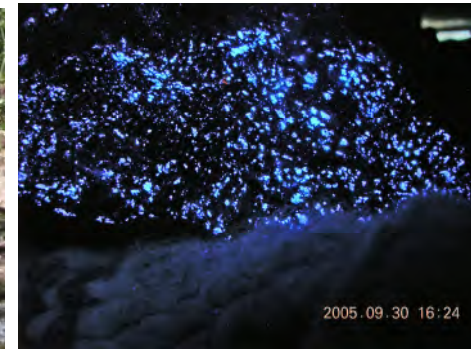
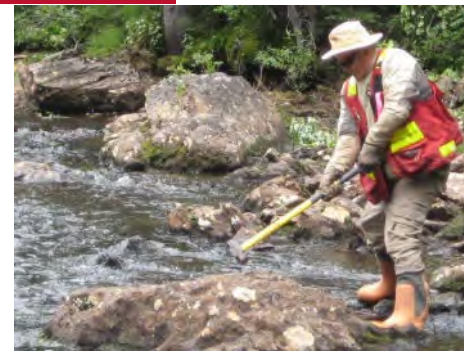
Small tracked drill minimizes
Surface disturbance, tree-cutting

- Heritage field reconnaissance surveys
- Archaeological Chance Find procedure
- Minimize disturbance and water use
- Reclaim disturbance ASAP
- Multi-year permits provide assurance

Our History of Significant Discoveries

Fox Tungsten District

- Discovered by prospecting
- 10km X 5km mineral system
- **Advanced three high-grade deposits** 43-101 resource, open for expansion
- Multiple tungsten targets ready to drill



2005 high-grade tungsten discovery: "Happy Creek"

Highland Valley Zones 1 & 2

- Acquired 200 Km² over 18 years
- Discovered **two copper deposits**, open for expansion
- Multiple copper targets
- **Sold to Metal Energy Corp. Nov. 2024**



Highland Valley drilling high grade bornite copper



Why British Columbia?

Tier 1 mining jurisdiction

Senior mining companies continue to acquire projects here:

Fortescue (\$52b Company) a recent addition

Stable legal framework

Robust permitting process

>\$5.5b in recent mining M&A

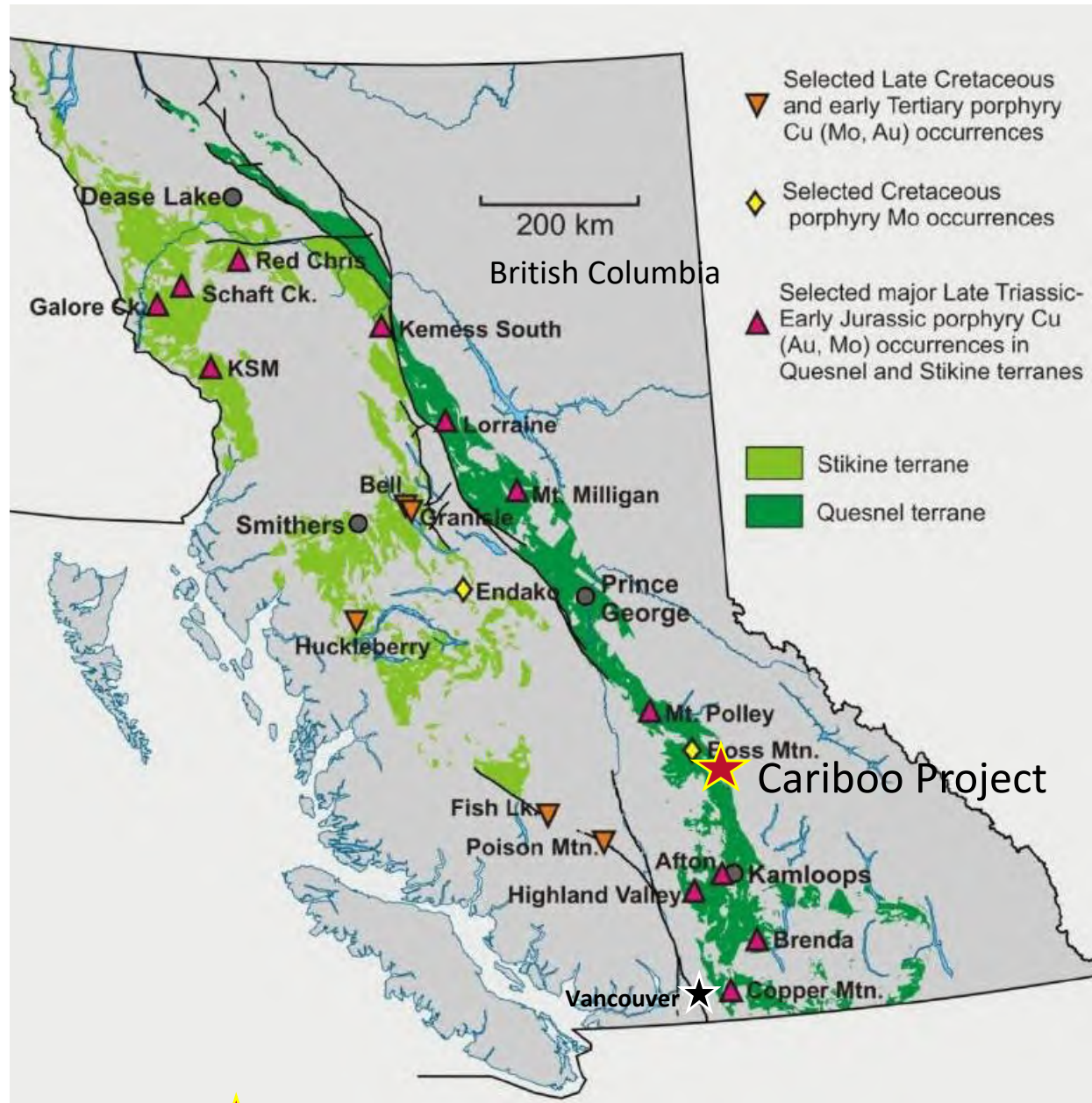
World-class copper endowment:

Canada's largest copper and molybdenum producer

Easy access to rail, ports

Low-cost green hydropower

Happy Creek's Cariboo project is in the southern BC mining district



 **Happy Creek's BC Project Location**

Cariboo Region Projects

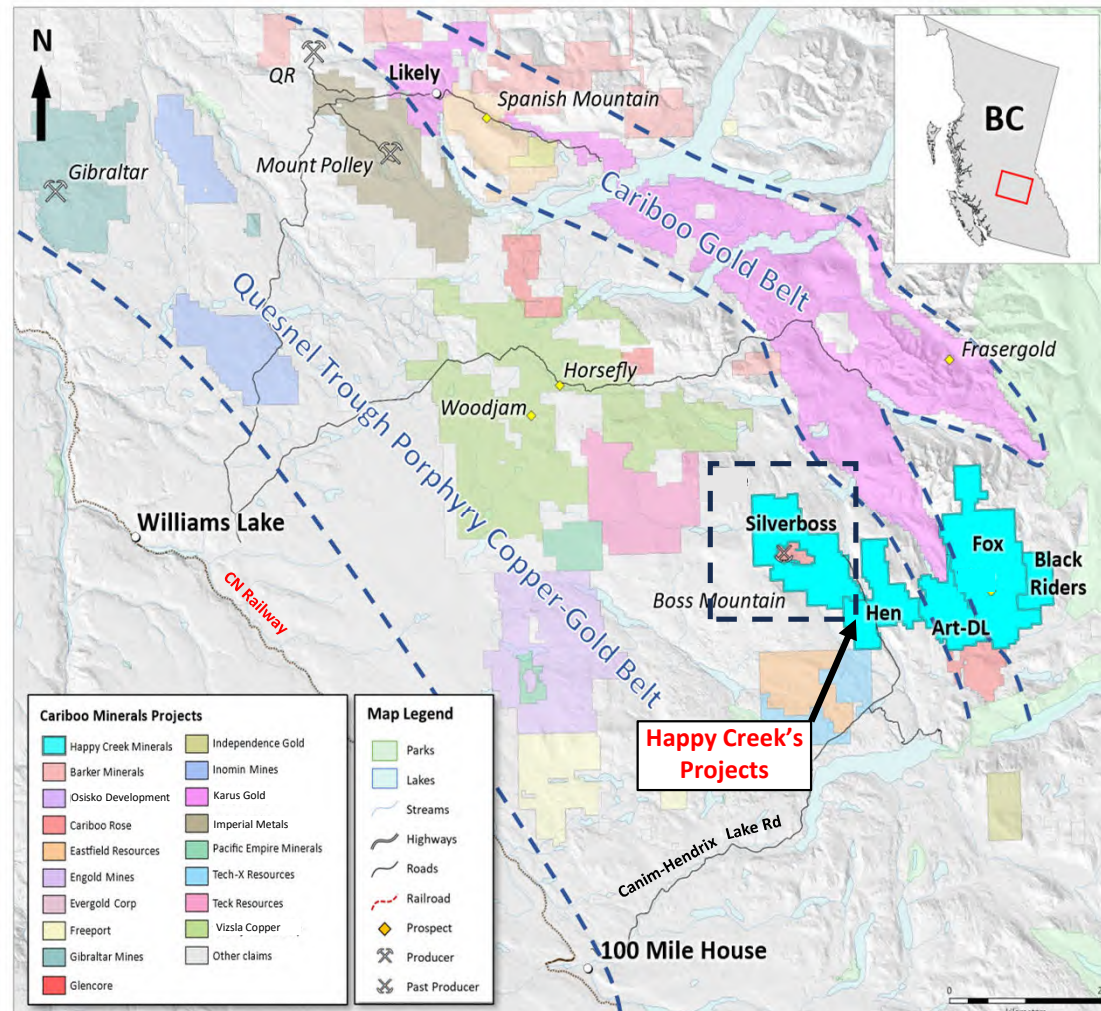
100%-owned projects with new discoveries of tungsten, copper, molybdenum, gold, silver



- Superb infrastructure
- Supportive resource communities
- Large contiguous property covers:
 - Fox tungsten + molybdenum
 - Hen-Art-DL gold-silver
 - **Silverboss gold-silver copper-molybdenum**

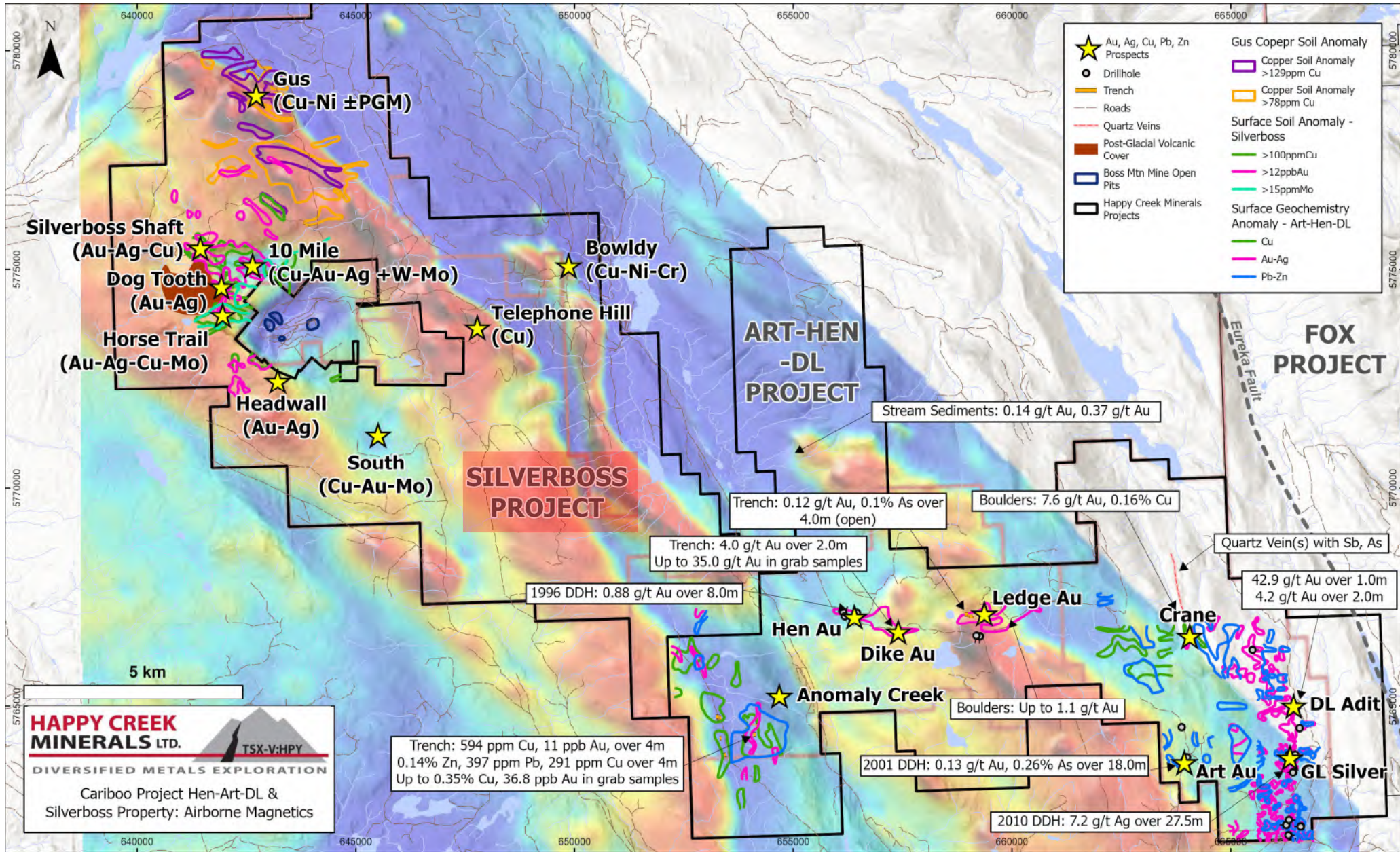
Cariboo mining district includes:

- Gibraltar copper-molybdenum mine
- Mount Polley copper-gold mine
- Cariboo and QR gold mines
- **Boss Mountain molybdenum mine (closed)**
- Frasersgold and Spanish Mountain gold projects
- Woodjam copper-gold project
- Famous Cariboo placer gold fields



Cariboo Projects

Silverboss, Hen-Art-DL Regional Magnetics and Prospects



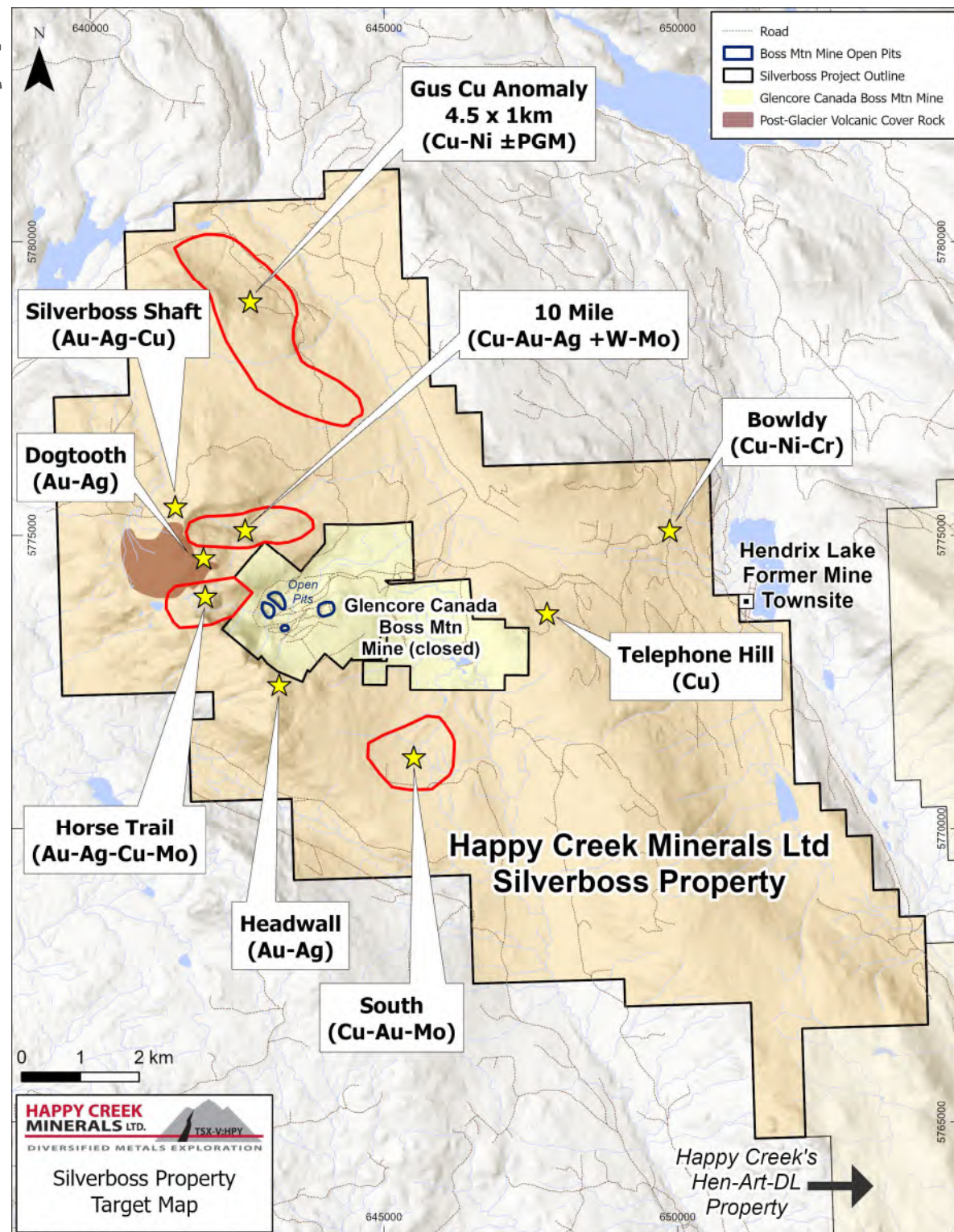
Silverboss Project

Copper, Molybdenum, Gold, Silver

Key Prospects



- Drill-ready project surrounding brownfield molybdenum mine site
- Numerous targets with only 5 historic holes
- Silverboss Shaft, Dogtooth and Horse Trail: high-grade gold-silver with copper
- Gus: >4.5 km long copper soil anomaly (open) with local values of silver, palladium & nickel
- 10 Mile Creek molybdenum target: +3 km-long tungsten-molybdenum soil anomaly adjacent to the high-grade Boss Mountain mine deposits
- 5-year permit for 30 drill pads



HAPPY CREEK MINERALS LTD. TSX-V:HPY
 DIVERSIFIED METALS EXPLORATION

Silverboss Property Target Map

Happy Creek's Hen-Art-DL Property →

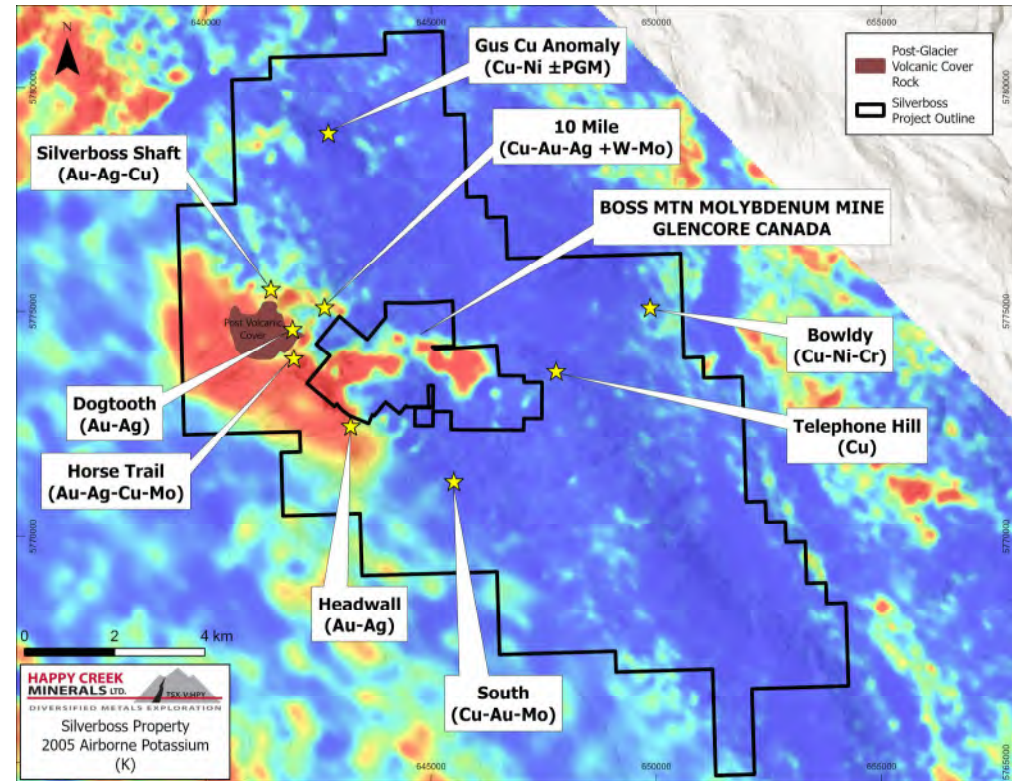
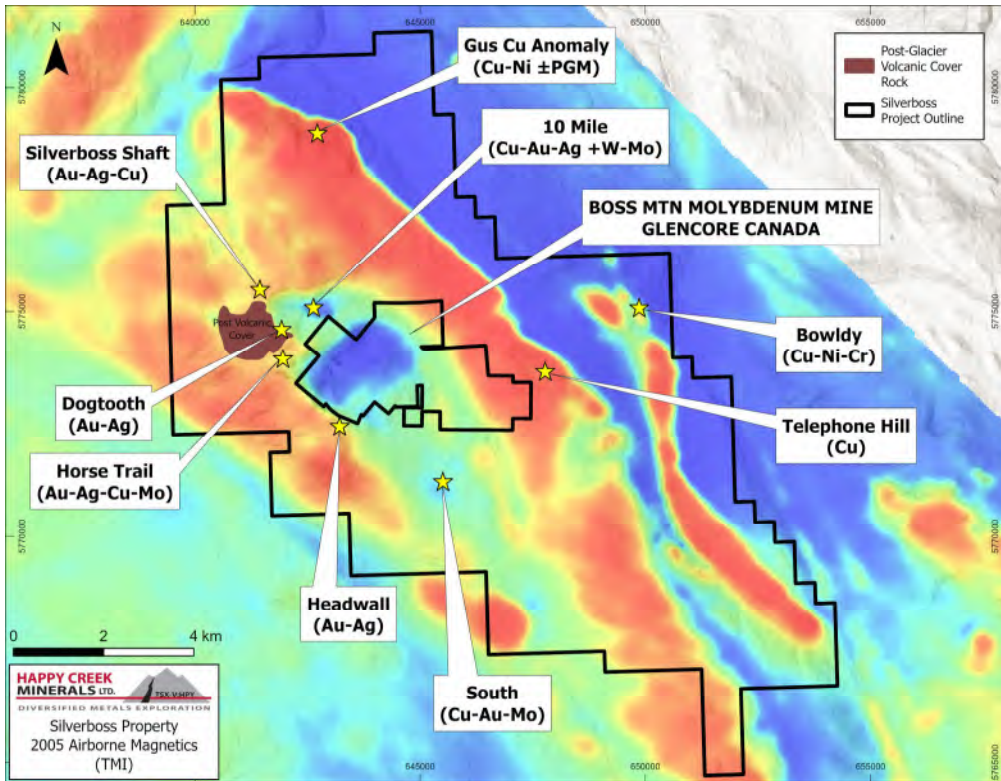
Silverboss Project

About the Boss Mountain Moly Mine



- Boss Mountain molybdenum mine was Canada's first moly-only and highest-grade
- 7.59 mt @ 0.205% Mo recovered from open pits and underground from 1965-1983 ¹
- Underground mining began in 1965. Open pit was initiated in 1977 via connecting with the underground. Three open pits were in operation by 1980 with 50% of mined ore from underground
- When molybdenum prices plummeted to around \$2.50/ lb the mine closed
- During the early exploration, subsequent development and operation of the mine- almost all funding was directed to finding molybdenum mill-feed. Gold, copper, tungsten was not sought
- In 2014, 11 holes totaling 3,108m on the Boss Mine site included two that cut exceptional molybdenum grades within 300 m of Happy Creek claim boundary ^{2,3}
- The moly deposits are open, and form part of a very large-scale mineral system

Silverboss Project



Happy Creek's History:

In January 2004, Noranda dropped numerous mineral claims surrounding their past-producing Boss Mountain Molybdenum Mine

Prospectors immediately staked claims covering this area and began locating numerous new showings on ground previously held by Noranda since the 1960's, and nearby. Happy Creek acquired the project in 2006, and added more mineral claims by staking or purchase

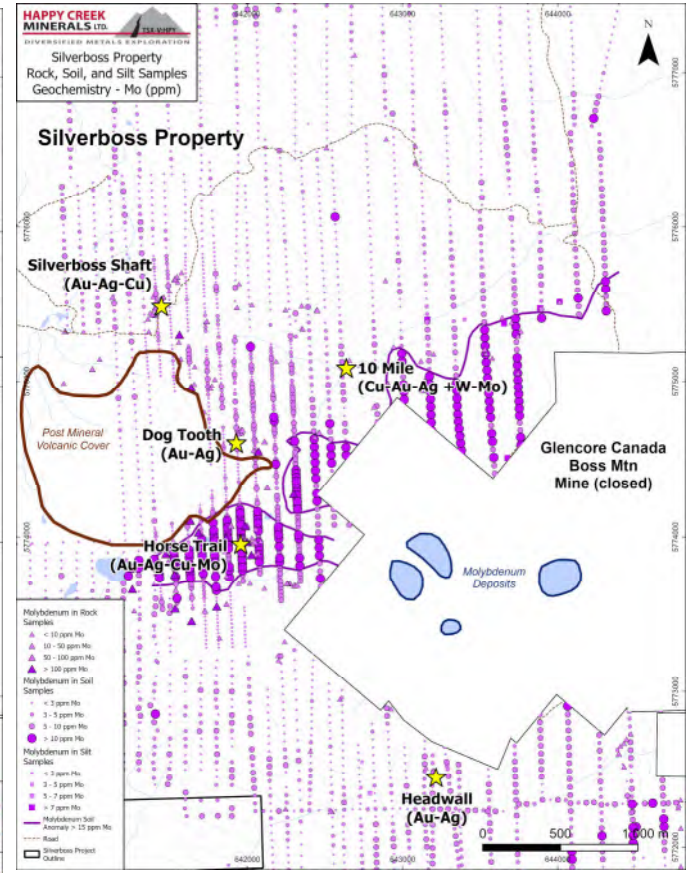
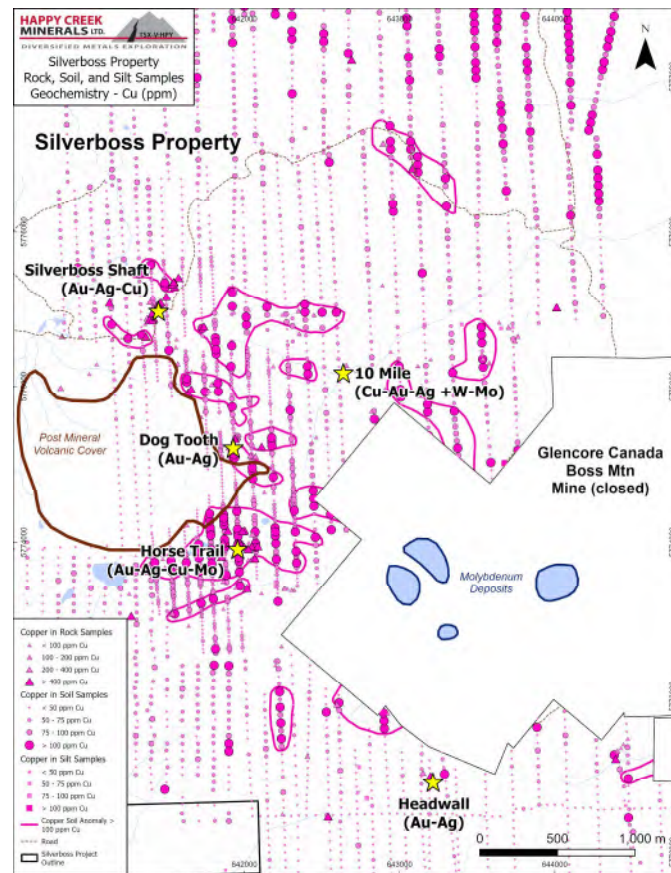
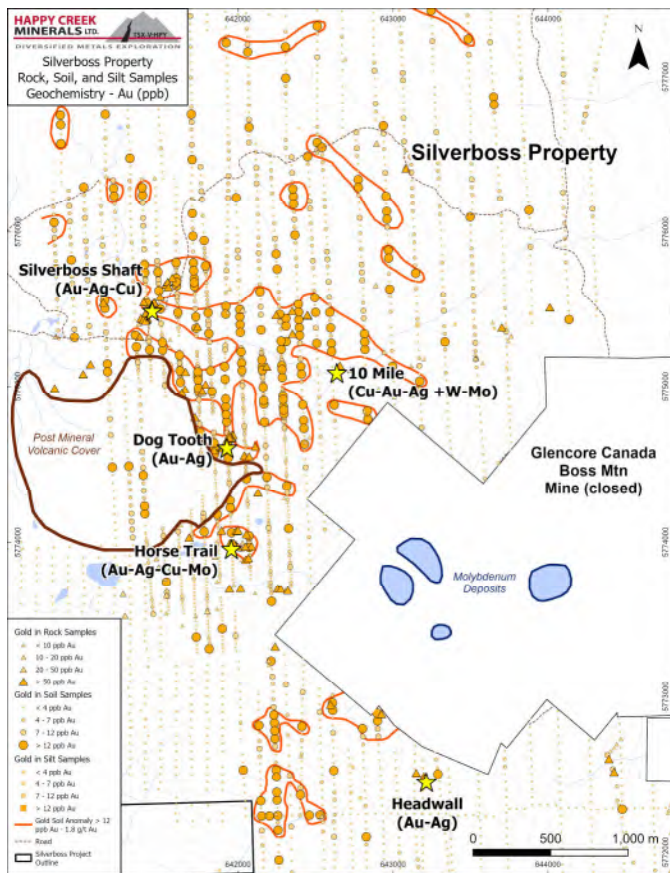
New detailed airborne surveys show **mineralization is clearly associated with magnetics and potassium**

Silverboss Project: Geochemical Surveys

Gold

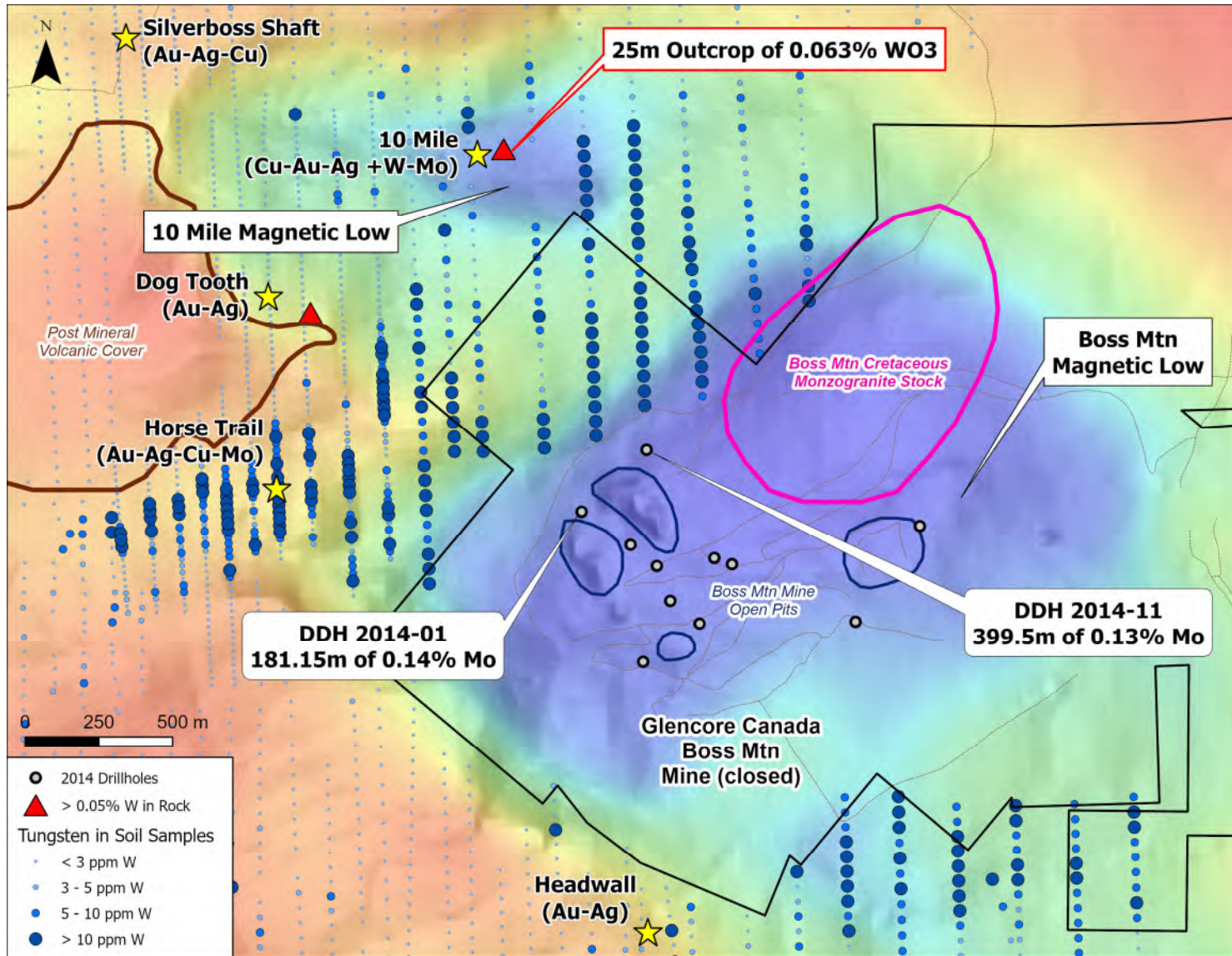
Copper

Moly



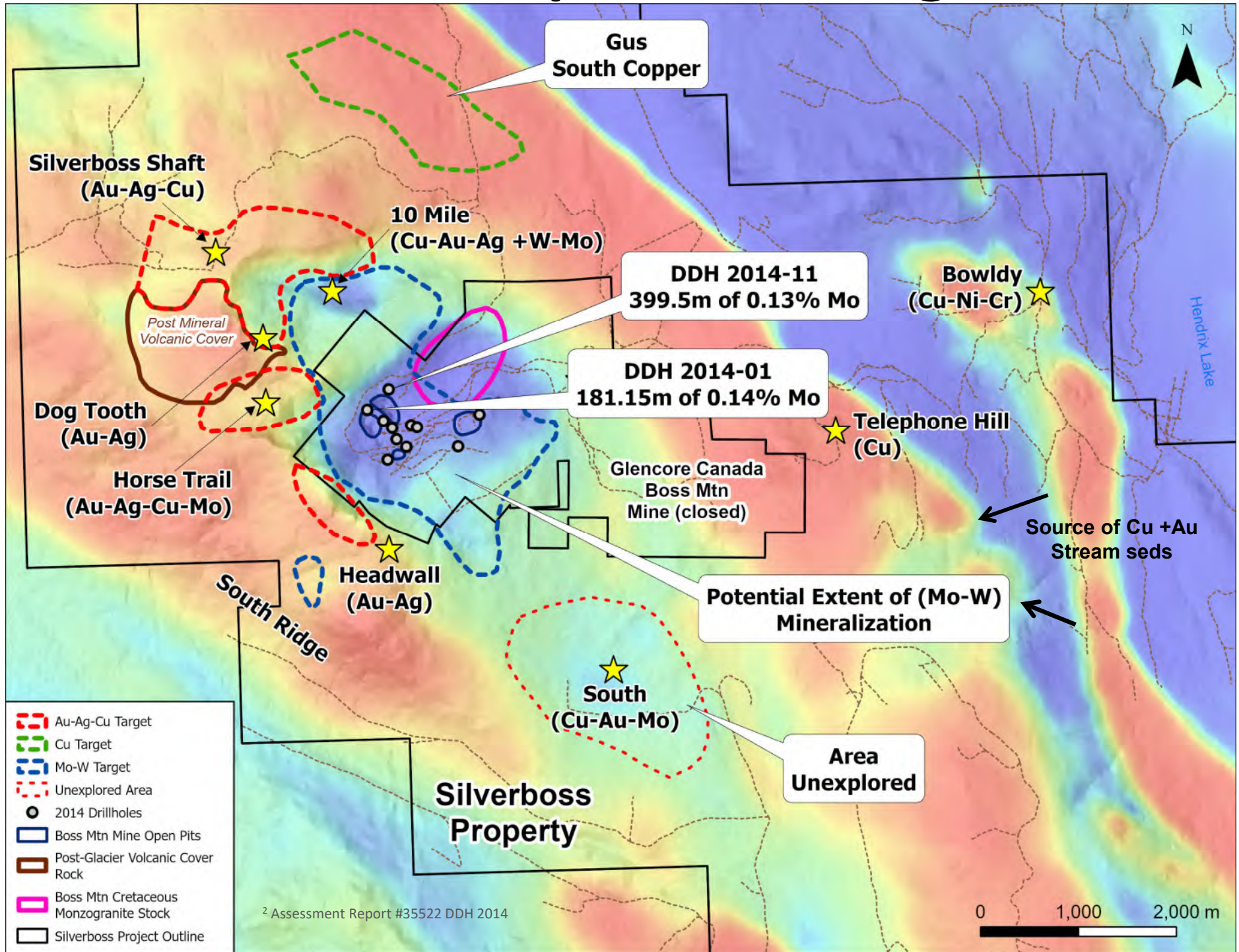
Much larger scale mineralization than previously known- unrecognized gold, silver and copper

And tungsten (W) occurs with Mo, Cu, Au, Ag



W & Mo are associated with Cretaceous age intrusions- as at Fox tungsten
10 Mile Creek is a quality target for another Mo (W) deposit.

Silverboss Exploration Targets

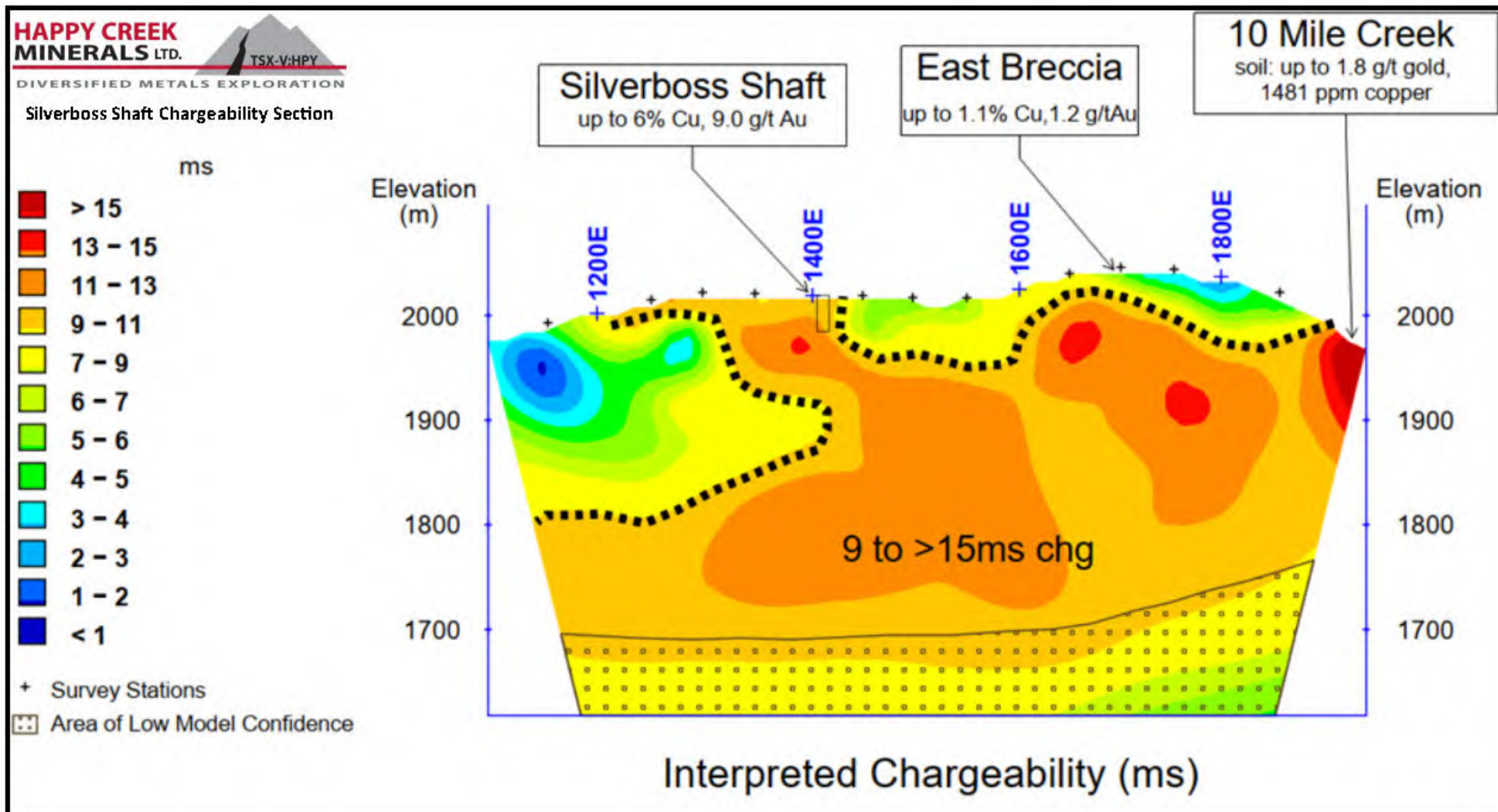


Silverboss Shaft

Discovery Potential

Permitted, drill-ready

No historical drilling

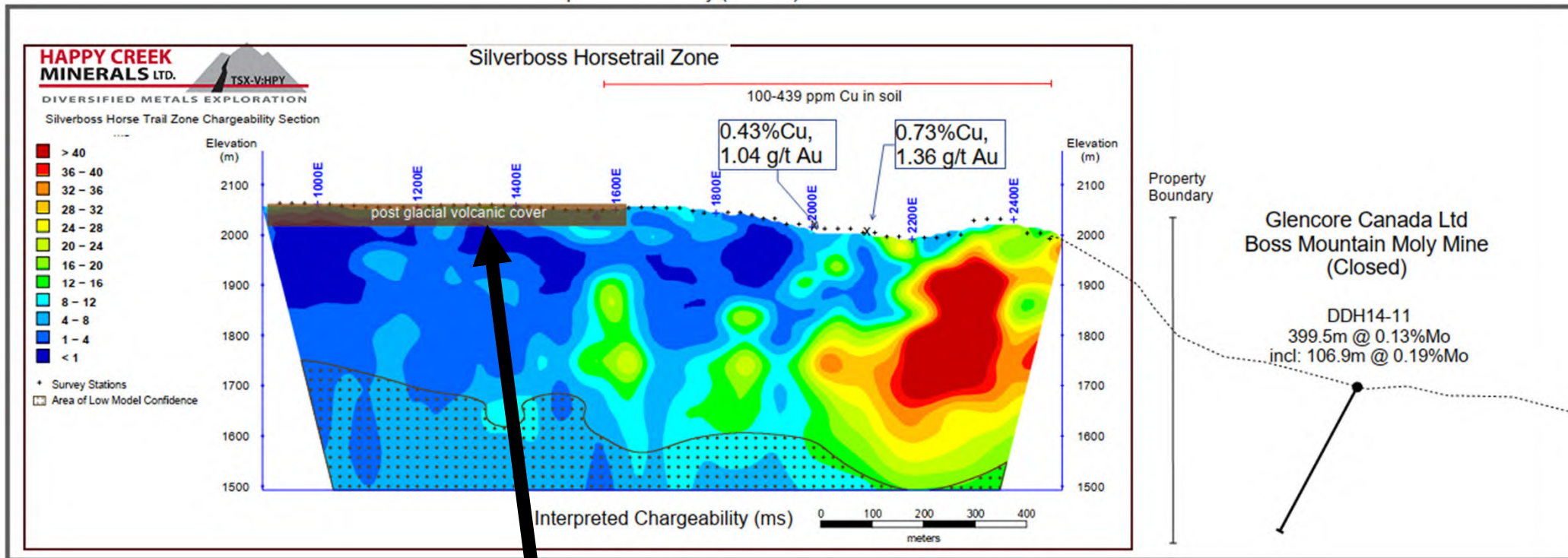


Discovery Potential

Silverboss Horse Trail

No historical drilling

Permitted, drill-ready



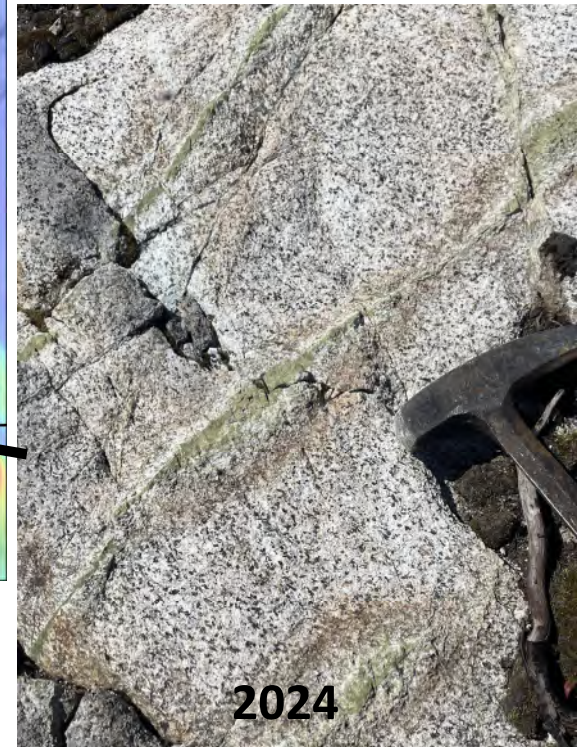
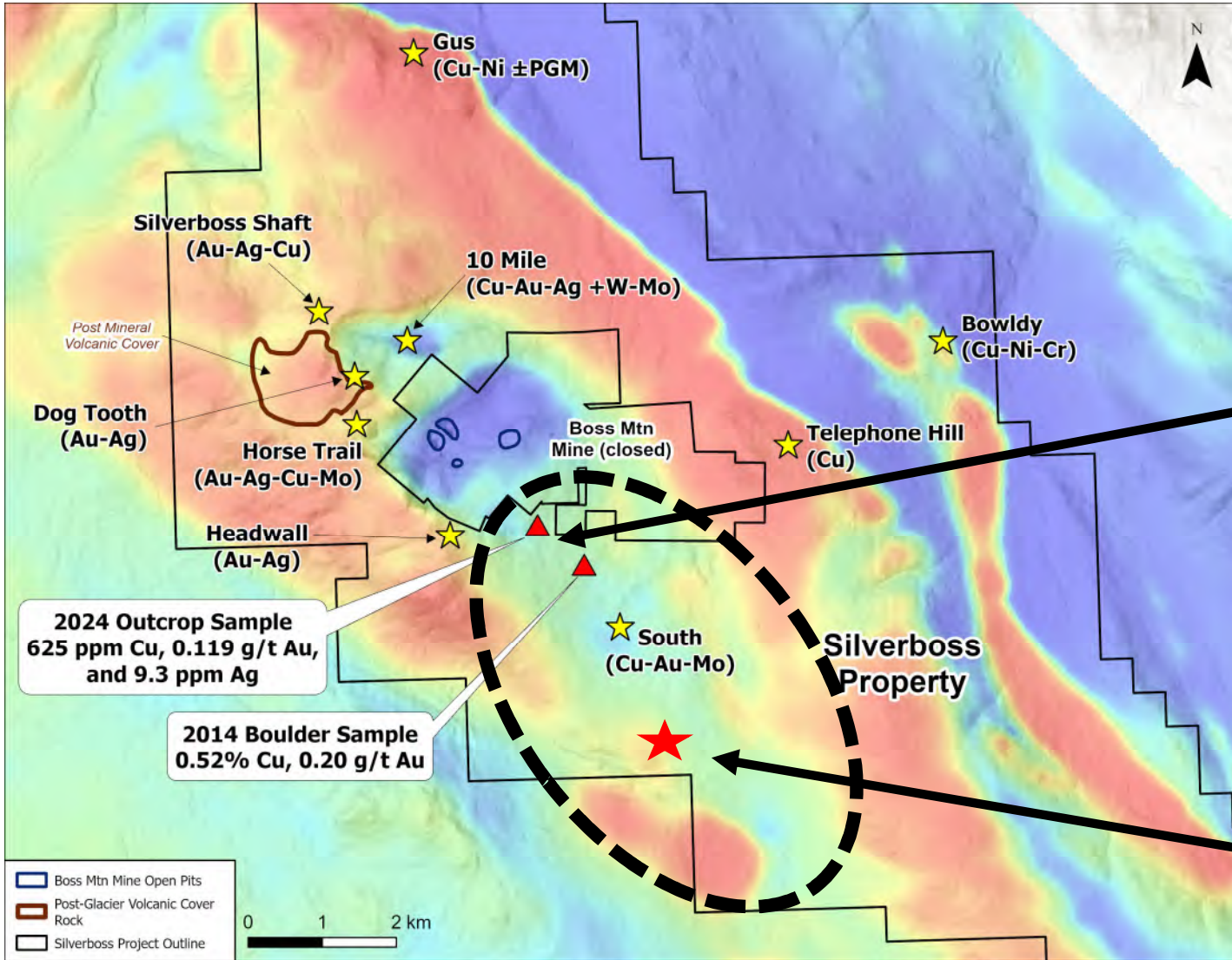
Thin recent volcanic rock layer covers older, mineralized rocks. Geochemical anomalies stop at the edge; **Mineralization may occur beneath this area.**

Discovery Potential

Silverboss - South

No historical drilling

IP Geophysics first. Permitted for drilling

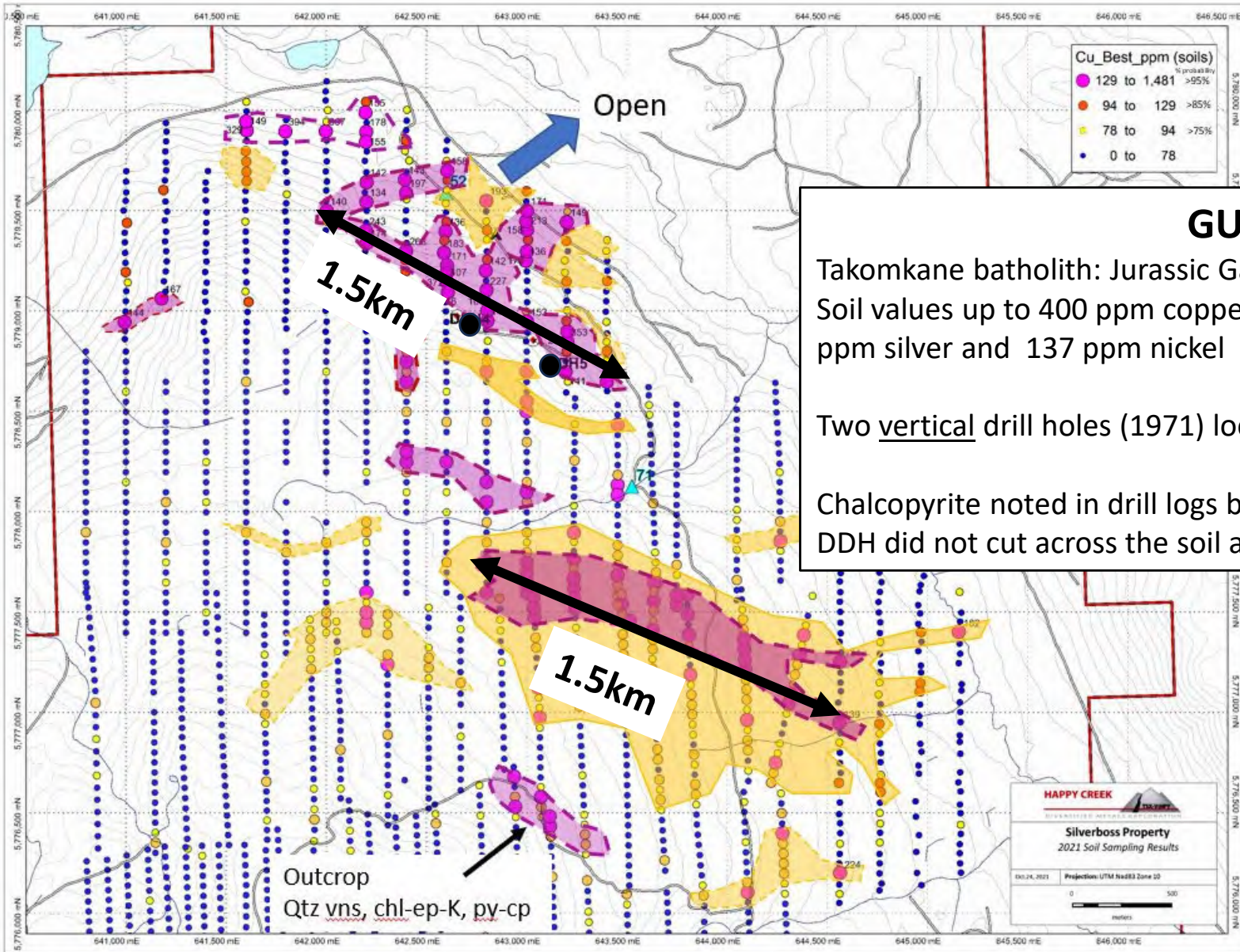


Silverboss Gus Target Copper-nickel-PGE

Discovery Potential

IP or EM Geophysics first. Permitted for drilling

Happy Creek outlined two large Cu soil anomalies



● 1971 DDH

Silverboss Project

Plans for 2025 and beyond



- Permits received for trenching and drilling at
- Silverboss Shaft Cu-Au-Ag,
- Horse Trail Cu-Au-Ag (Mo)
- Dogtooth Au-Ag,
- IP Geophysics at 10 Mile Creek and South target then drill
- IP or EM Geophysics at Gus Cu-Pd-Ag-Ni target to define precise drill locations

Budget Phase 1

\$500,000 Geology & Geophysics: IP and EM at 10 Mile Creek, South Grid and Gus

\$1,000,000 Drilling: 2,500m drilling 12 holes

Total: \$1,500,000

- Opportunity for several new discoveries: Cu-Au-Ag & Mo-W
- Excellent Infrastructure and potential low-cost development

Summary

- Proven, invested team with record of successful discovery, development and mining
- Multiple opportunities to create value, with permits in place for drill programs on 100%-held projects
- Large deposit potential in established mining districts:
- Silverboss: Surrounds former high-grade molybdenum mine.
- Untested very large-scale mineral system
- Copper, Molybdenum, Gold, Silver targets



Thank you

For more information please contact:

Jason Bahnsen, President and CEO

Email: jbcanda201@gmail.com

Phone: 604-788-7287

www.happycreekminerals.com



HAPPY CREEK
MINERALS LTD.

Silverboss Addendum

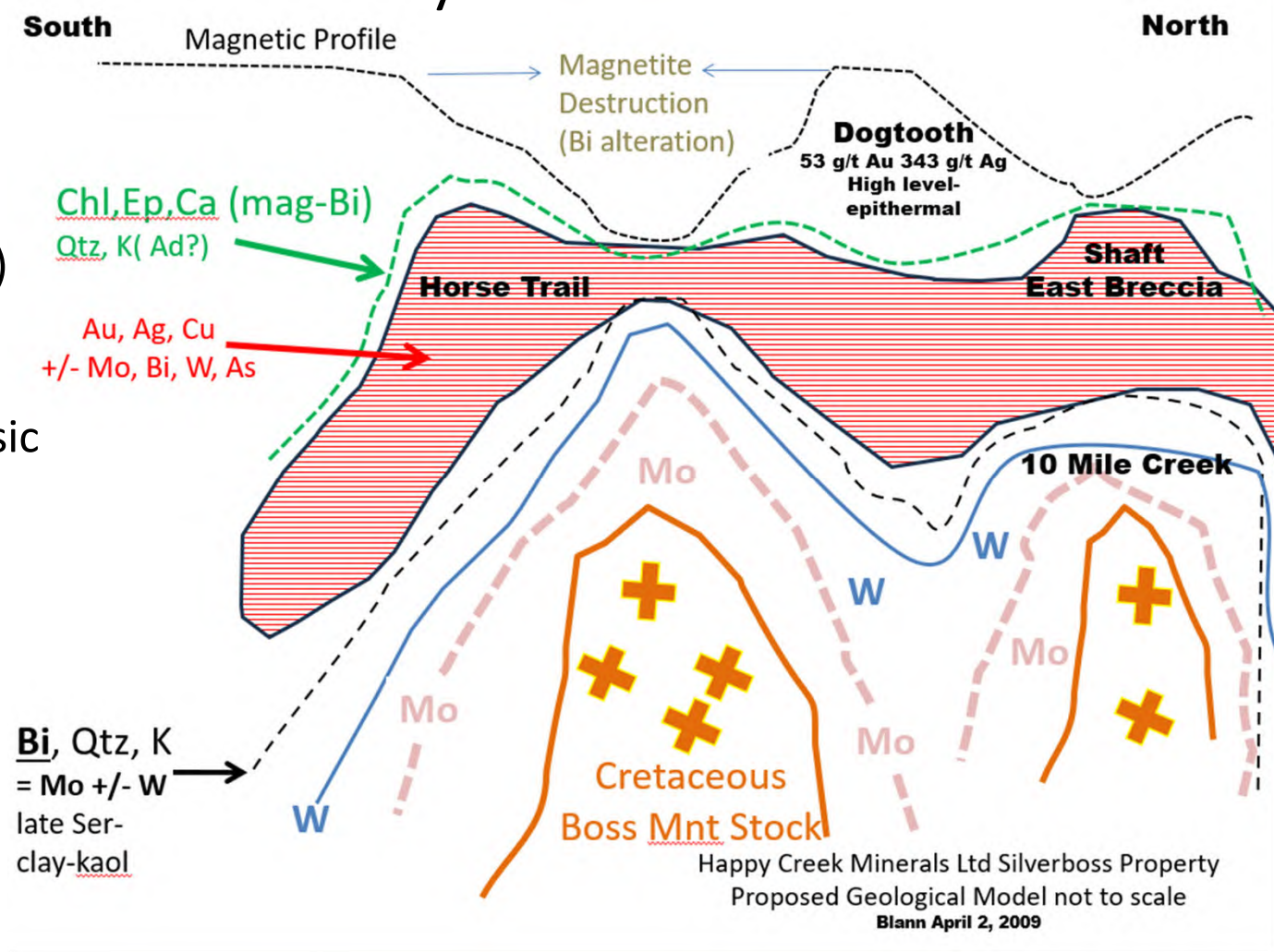


Silverboss Project

Hypothetical Mineral system Model

2) ~98MY age (Cretaceous)
 porphyry Mo-W
 -> Boss mnt mine, Fox tungsten)

1) ~200MY age Triassic-Jurassic
 Takomkane Batholith
 porphyry Au-Ag-Cu +/-Mo
 (ie: Woodjam)

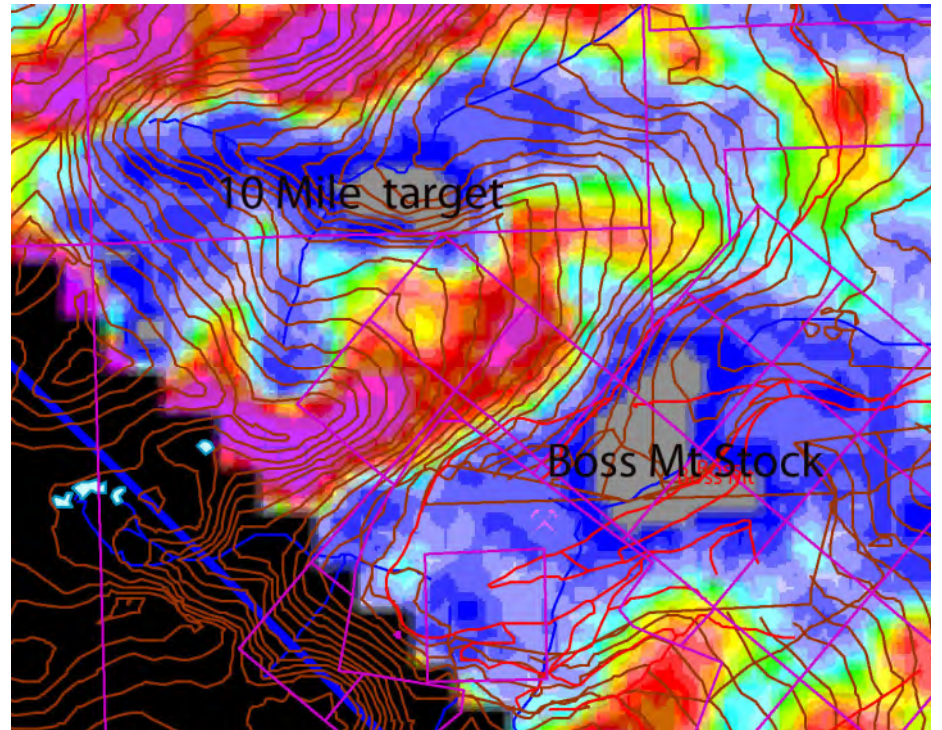


Most plausible: 2 ages of mineralization overlap

Complications: andesite and felsic dikes associated with both W-Mo and Cu-Au-Ag

Silverboss Shaft
circa 1915





(Boss Mnt Moly mine pit)

