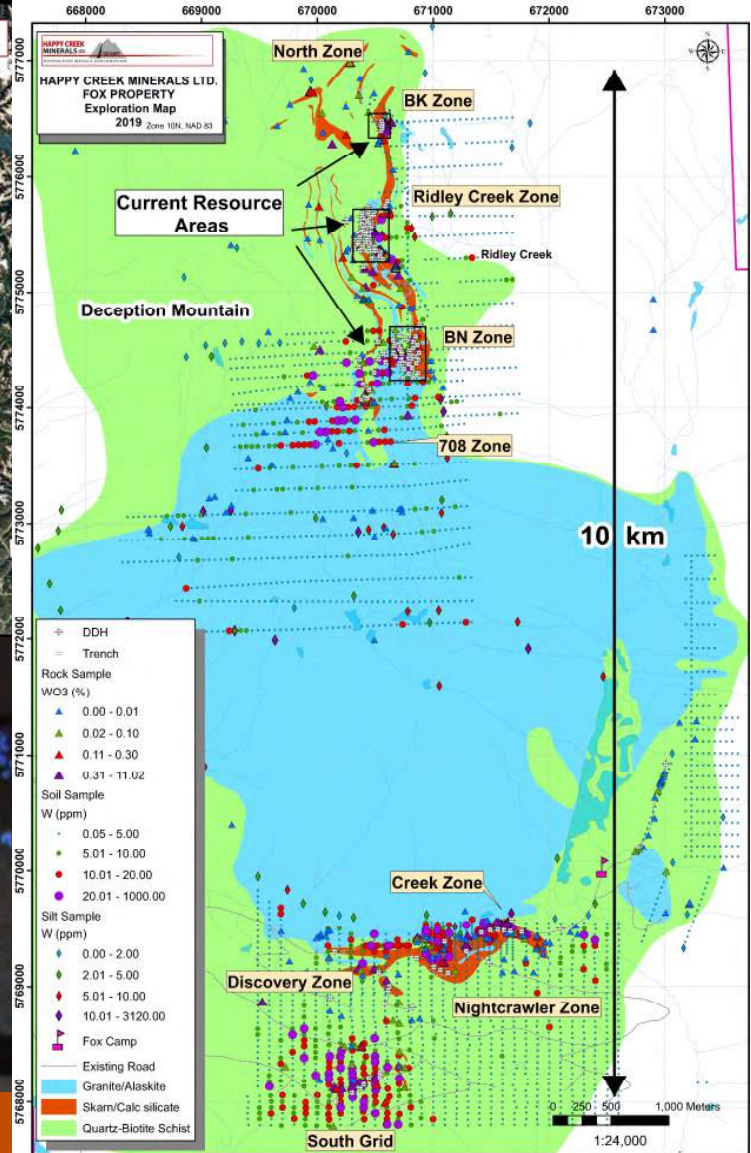
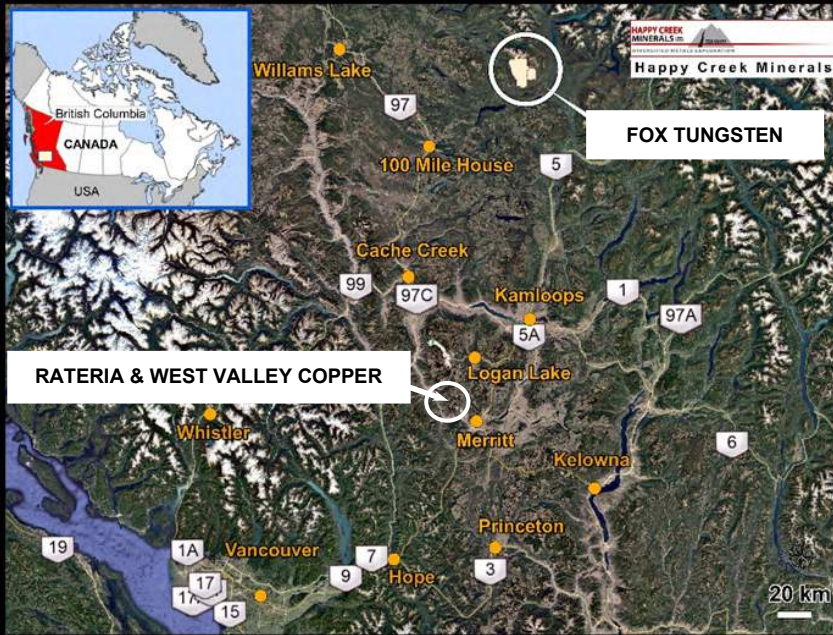


**Fox Tungsten Project**

Among the highest grade tungsten resource in the western world.



**Management & Directors**  
**David Blann, P.Eng., President, CEO, Director**  
**Walter Segsworth, P.Eng., Director, Chair**  
**Rodger Gray, Director**  
**Paul Berndt, FAusIIM, Director**  
**Michael Cathro, P. Geo., Director**  
**Richard Lee, CMA, Chief Financial Officer**

**Shares outstanding: 93.5m**  
**Insiders: 19,611,703 (21%)**  
**Warrants: 524,171 @ avg. \$0.30**  
**Options: 5,700,000 @ avg. \$0.21**

This research profile is for information purposes only and may contain statements that are forward looking and subject to risks and uncertainties more fully described in the Company's Prospectus, Financial Statements and public filings located on SEDAR. Neither the TSX Venture Exchange nor its Regulation Services Provider (as that term is defined in the policies of the TSX Venture Exchange) accepts responsibility for the adequacy or accuracy of information contained herein. Results or information from an adjoining property does not infer similar results or information occurs on the subject property.

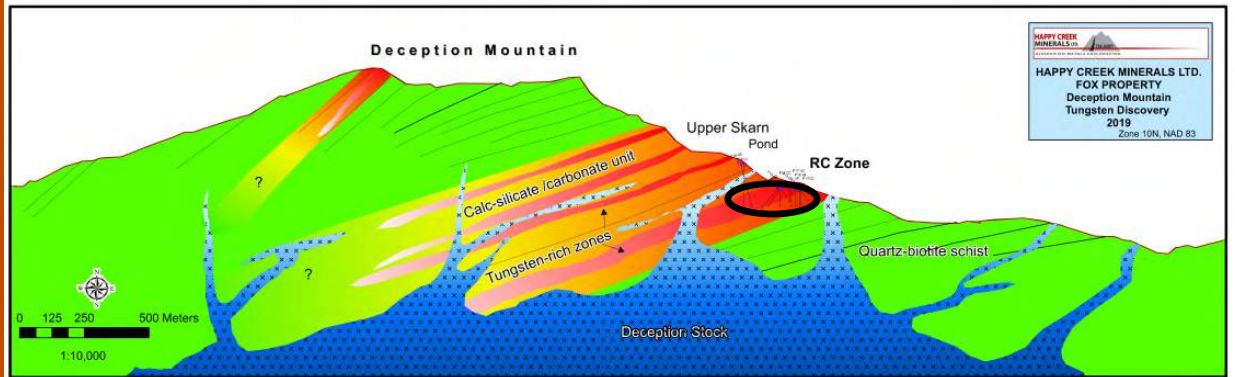
# Fox Tungsten

CLASSIFICATION	Cut-off WO <sub>3</sub> (%) OP/ UG	Tonnes (t)	WO <sub>3</sub> (%)	WO <sub>3</sub> MTU	WO <sub>3</sub> (kg) Contained
Indicated total	>0.175/>0.45	582,400	0.826	481,000	4,805,000
Inferred total	>0.175/>0.45	565,400	1.231	696,000	6,958,000
Indicated total	>0.15/>0.30	632,300	0.787	498,000	4,976,000
Inferred total	>0.15/>0.30	783,000	0.992	776,700	7,760,000



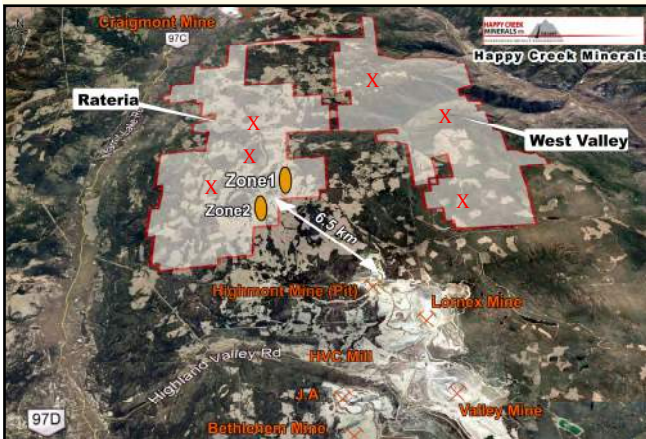
Scheelite (tungsten mineral) under UV light— is recovered by gravity tables in tests at SGS labs.

Values of zinc, indium, bismuth, gold and silver are not included in the resource at this time. Current WO<sub>3</sub> price around US\$30/Kg. Western publicly trading tungsten companies are developing or mining projects grading 0.18-0.45% WO<sub>3</sub>. North America produces less than 1% of demand and is heavily reliant on imports. Exploration continues to find more tungsten in this 10 km by 3 km mineral system.



# Rateria-West Valley Copper

240 km<sup>2</sup> in the Highland Valley, B.C.—Canada's best porphyry copper district



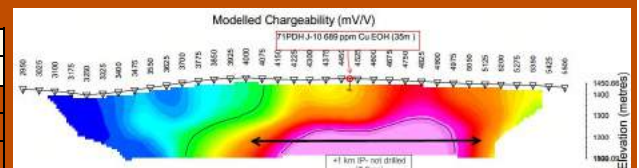
The Highland Valley district has 5 copper deposits that achieved commercial production. \$billions have been generated from over 50 years of continuous mining. Cut-off grade for reserves at the adjoining HVC mine is around 0.10% copper eqv. at \$2.70/lb<sup>1</sup> and reserves total 589mt 0.30% Cu<sup>2</sup>. Mill rate is approx. 50mt /year.

Zone 1&2 are new discoveries 6.5 km from an open pit, and both are defined by drilling for 1.2 km X 50-250m X 350m depth and open. Low pyrite, mainly bornite-chalcocite copper minerals produces a clean copper concentrate with 39.6% copper, 398.6 g/t silver. Elevated gold: **46m 0.64% Cu, 0.30 g/t gold**. Rhenium (Re) values up to 16 g/t.

First to assemble this 240sq km land package.  
At least 25 under-explored copper prospects on the property.  
**A tier-1 copper exploration asset in a prolific mining camp.**



Zone 1	Interval	Cu	Ag	Zone 2	Interval	Cu	Ag	Mo	Au	Re
DDH	(m)	%	g/t	DDH	(m)	%	g/t	%	g/t	g/t
R07-9	100	0.29	1.0	R08-01	113	0.33	1.5	0.002	0.05	N/A
R10-12	236	0.27	1.0	R08-05	126	0.46	1.7	0.008	0.10	N/A
R11-1	95	0.65	3.6	R12-01	93	0.30	1.5	0.005	0.15	0.02
R11-6	100	0.35	2.2	R12-02	152	0.35	1.7	0.004	0.06	0.57
R11-8	250	0.25	1.6	R17-02	5	4.41	20.0	0.031	0.21	6.86
R11-11	242	0.25	1.6	R17-05	105	0.37	1.9	0.005	0.14	0.63



We are continuing to generate many new drill targets.  
Potential for more discoveries.

1-Cut-off grade from 2013 NI43-101 Teck Highland Valley. 2- Teck website